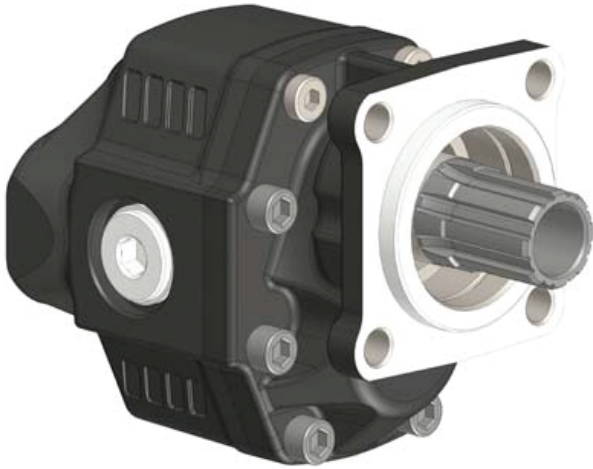


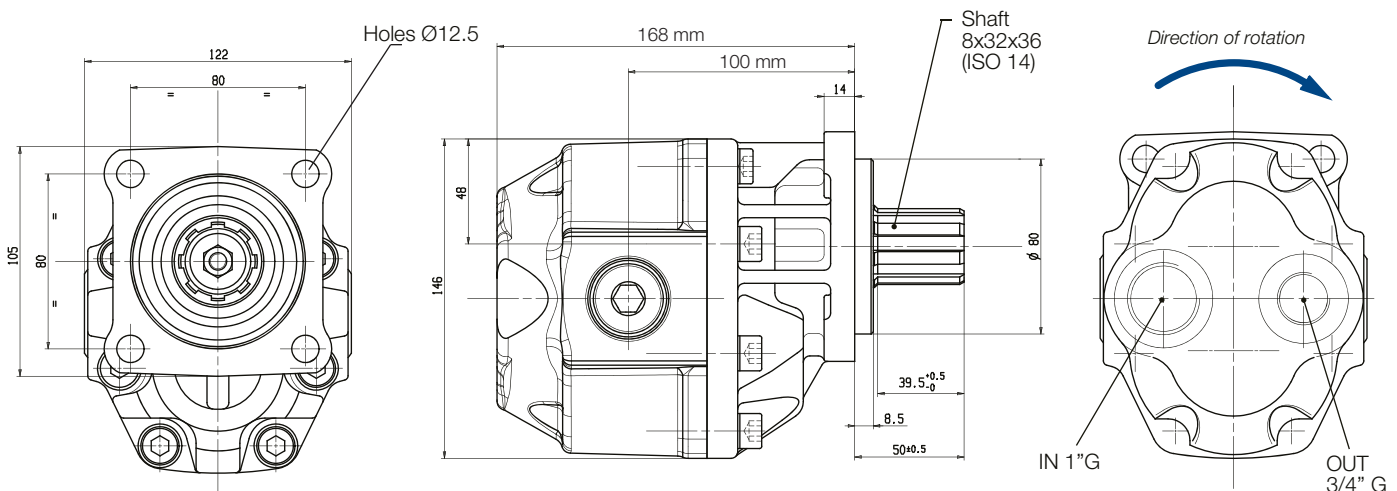
Gear Pump : EGP082220A



- 4-hole slim line gear pump
- Available as part of pump kit PKS9609/07
- 82cm³/rev output flow
- Maximum working pressure 190 bar
- Slim-line design for compact installation
- Optional inlet and outlets

KIT CONTENTS (PKS9609/07)

- | | |
|---------------------------------------|-----------------------------------|
| 1 x EGP082220A short design gear pump | |
| 1 x NR1664 | 1" - 1.5" suction fitting (elbow) |
| 1 x DPP45F/SC | 3/4" Dowty Seal |
| 1 x NR611/42 | 3/4" - 3/4" adaptor |
| 1 x NR627 | 3/4" - 3/4" female elbow |



PERFORMANCE

Displacement	cm³	82
Max. working pressure	bar	190
Peak pressure	bar	220

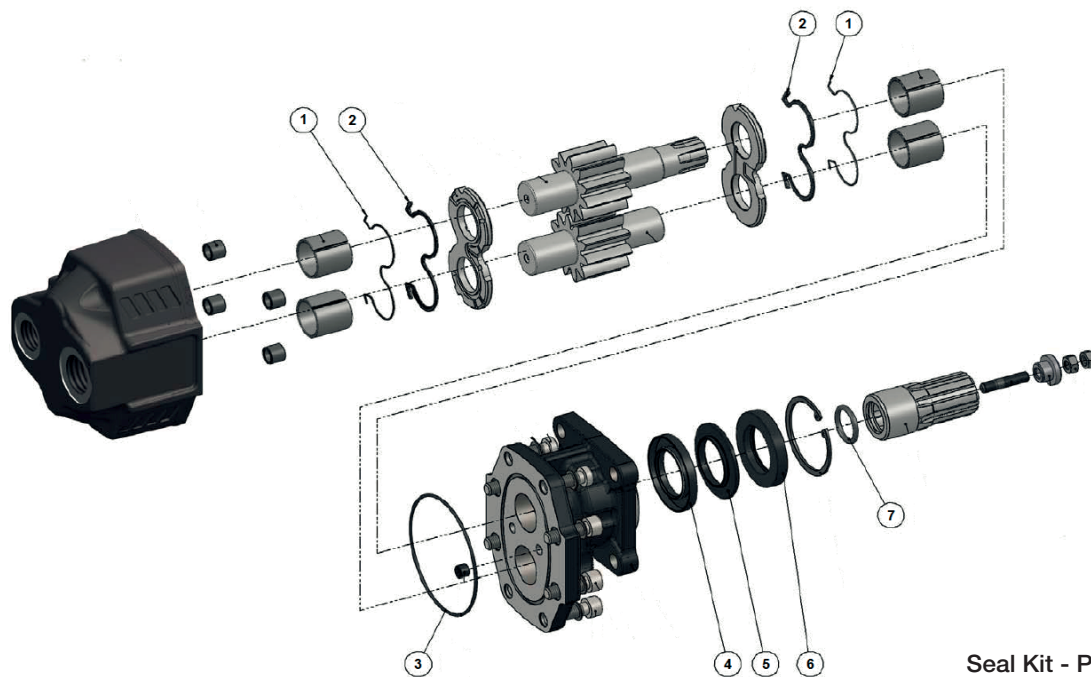
Pump Maximum Speeds, in rpm:

	Suction Size	
	1.5"	2"
Continuous @ 190 bar	1400	1400
Intermittent @ 210 bar	1700	1700

OIL & FILTRATION

- This pump is designed for low pressure, intermittent use, tipper systems without filtration.
- The oil should be a good quality hydraulic oil to ISO 6743/4 HM32 for -15° to +27°C working temperature.
- For extended life or for higher duty applications, 25µm absolute return line filtration is recommended.
- Oil cleanliness to be maintained to ISO 4406 class 19/16.
- Oil should be replaced annually.

SPARE PARTS



Seal Kit - Part no:
1059000357