

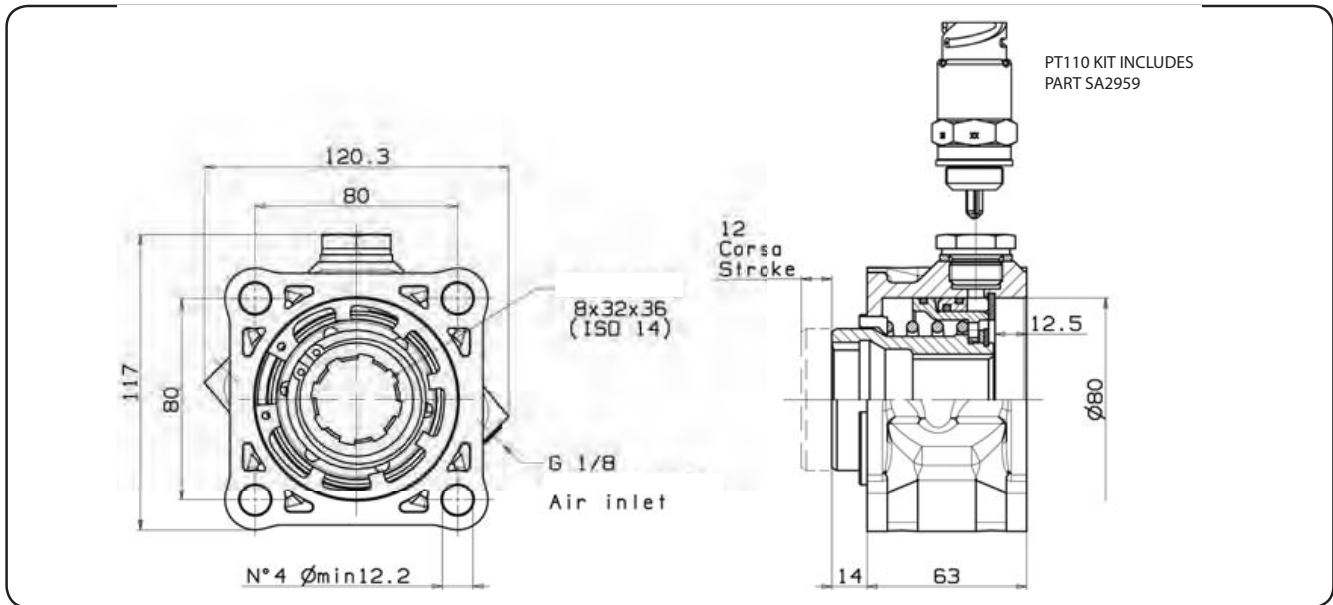
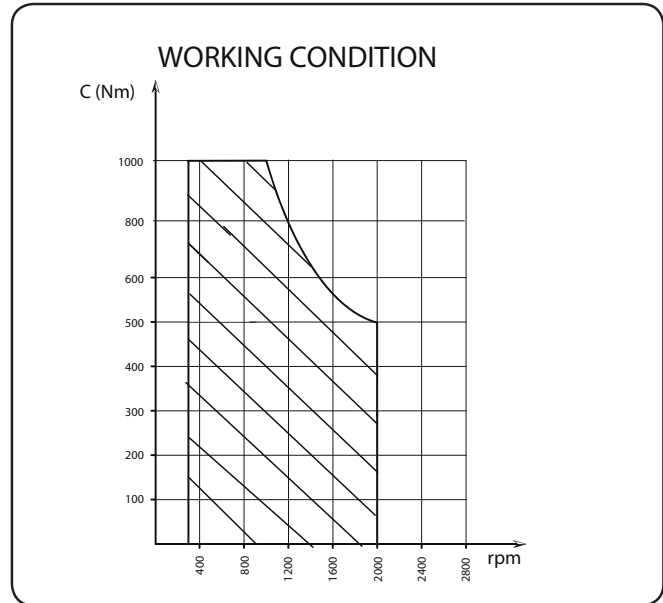
Edbro offers an extensive range of high performance PTO units to suit varying applications the world over.

From standard block PTOs to high speed dual output units, Edbro have the range and expertise to provide the solutions.

PTO - Block PTO - PT110-111



PT111



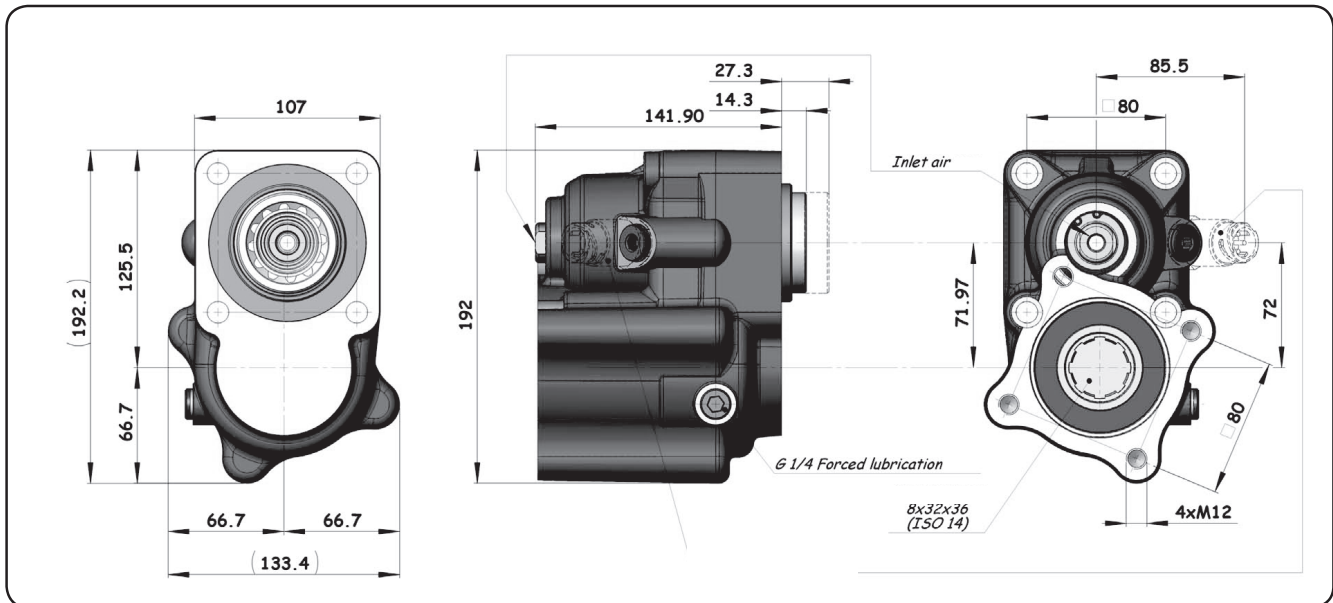
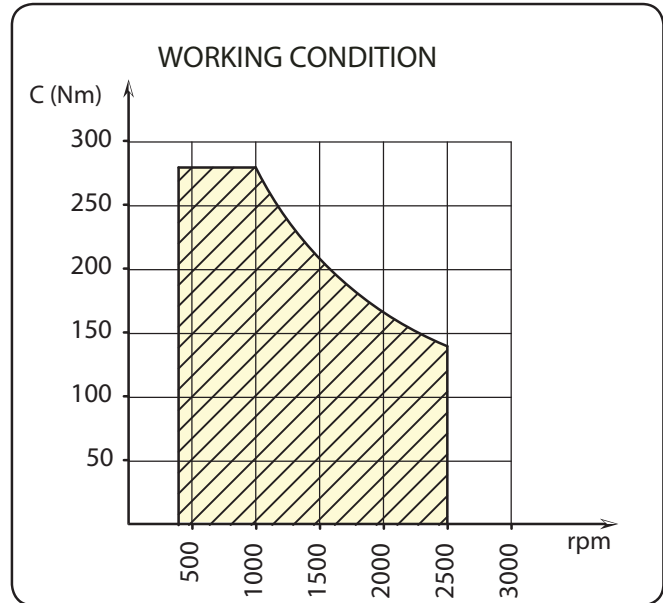
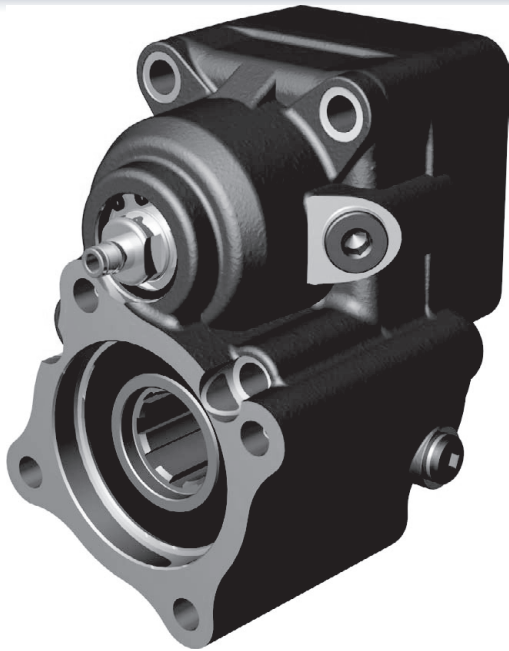
INCLUDES AIR FITTING

TECHNICAL SPECIFICATION:

Gearbox:	Volvo, Eaton, Mercedes, ZF, Scania
Max torque:	1000 Nm
Mounting side:	Rear
Output:	Rear
Rotation:	Clockwise
PT110 Conversion:	Merit Bayonet required Part No. SA2959

All dimensions are given in mm unless otherwise stated. Technical Specifications are subject to change without notice.

PTO - Twin Wheel PTO- PT211



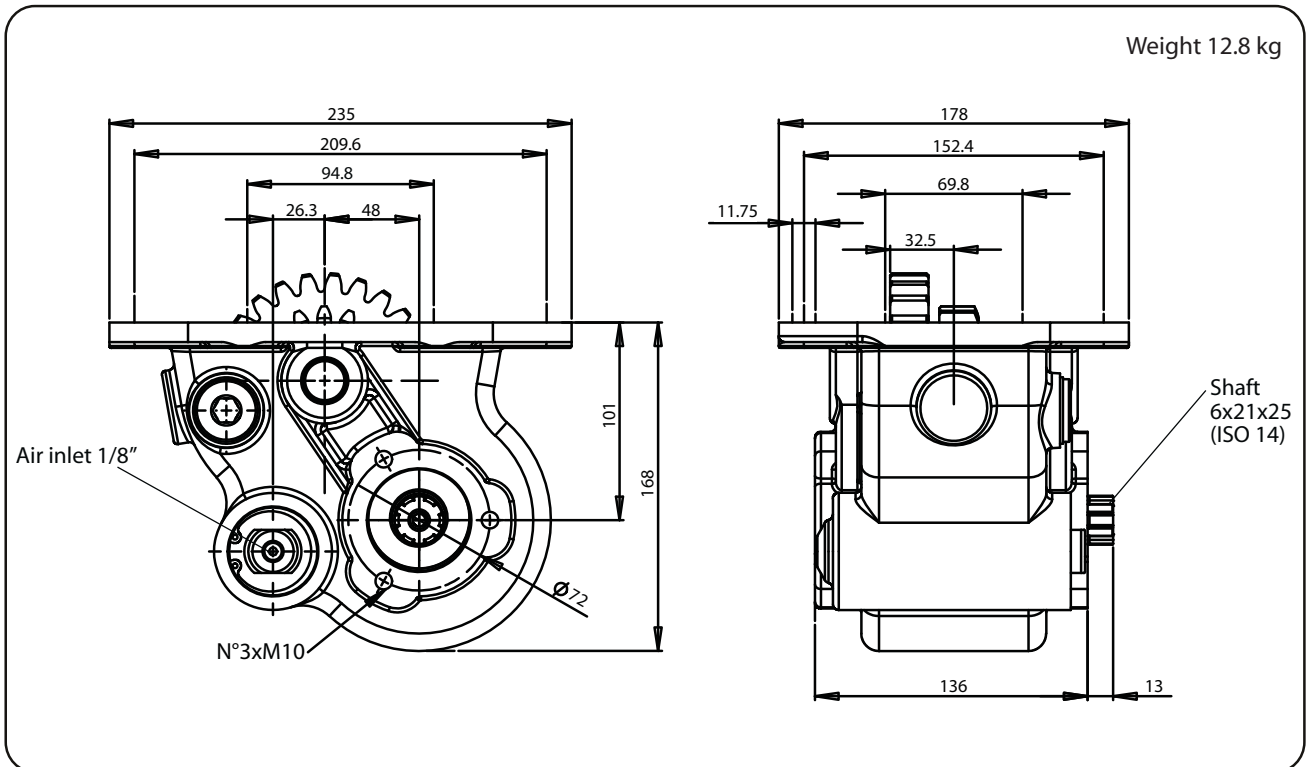
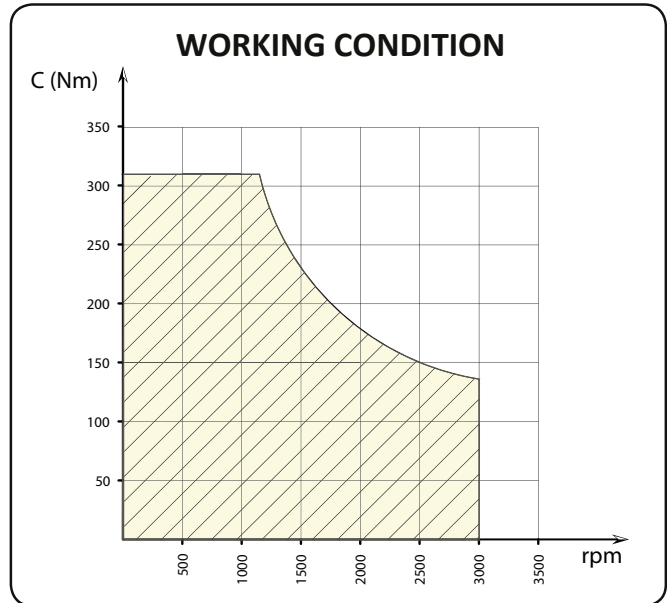
TECHNICAL SPECIFICATION:

- Gearbox: Eaton-E, Mercedes, Volvo and ZF
- Max torque: 280 Nm
- Mounting side: Rear
- Output: Rear
- Rotation: Anti-Clockwise
- Weight: 11kg

All dimensions are given in mm unless otherwise stated. Technical Specifications are subject to change without notice.

Fuller Roadranger: High Speed Range - PT346

Available as kit PKS2315/05 containing:
PT346 PTO
SA3052 mounting kit

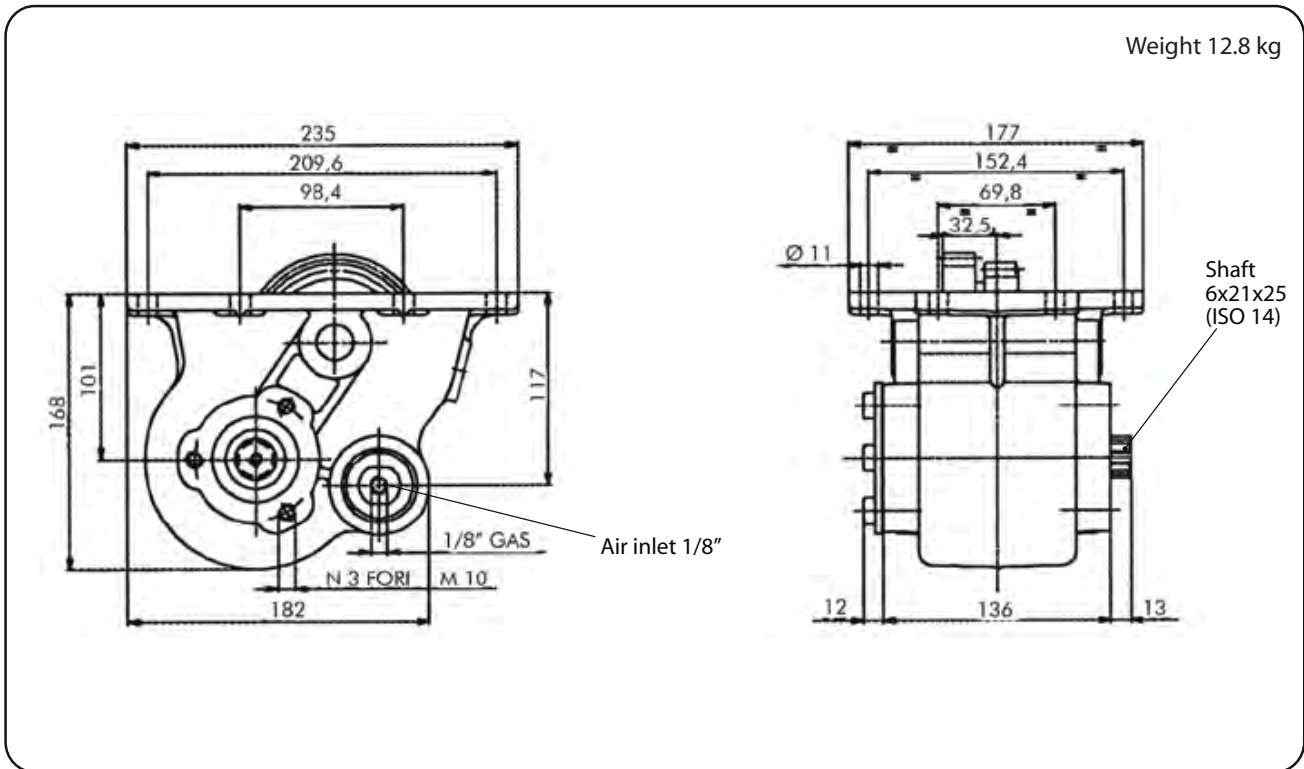
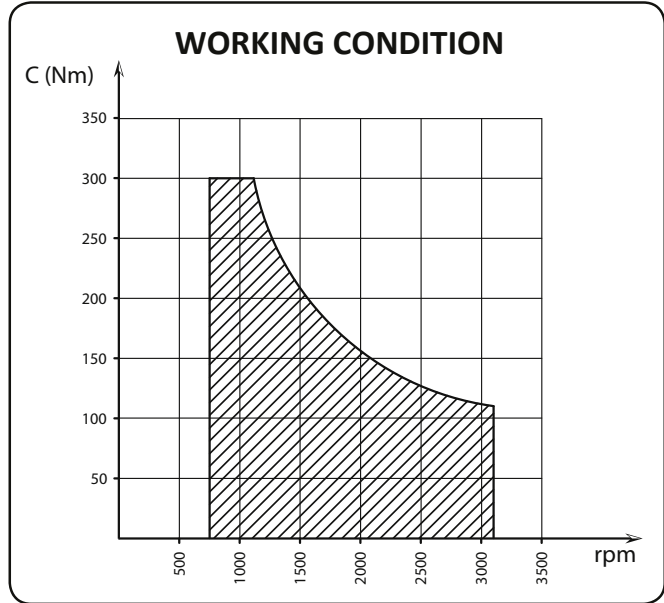
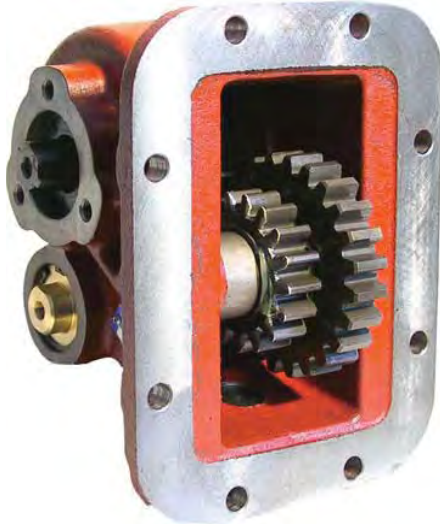


PTO Kit	PTO	Max Torque (Nm)	Mounting Side	Output	Rotation	Mounting Kit
PKS2315/05	PT346	320	Left	Rear	Clockwise	SA3052

All dimensions are given in mm unless otherwise stated. Technical Specifications are subject to change without notice.

Fuller 14613 Roadranger: Low Speed Range 3 Bolt - PT347

Available as kit PKS2315/06 containing:
PT347 PTO
SA3052 mounting kit



PTO Kit	PTO	Max Torque (Nm)	Mounting Side	Output	Rotation	Mounting Kit
PKS2315/06	PT347	300	Left	Rear	Clockwise	SA3052

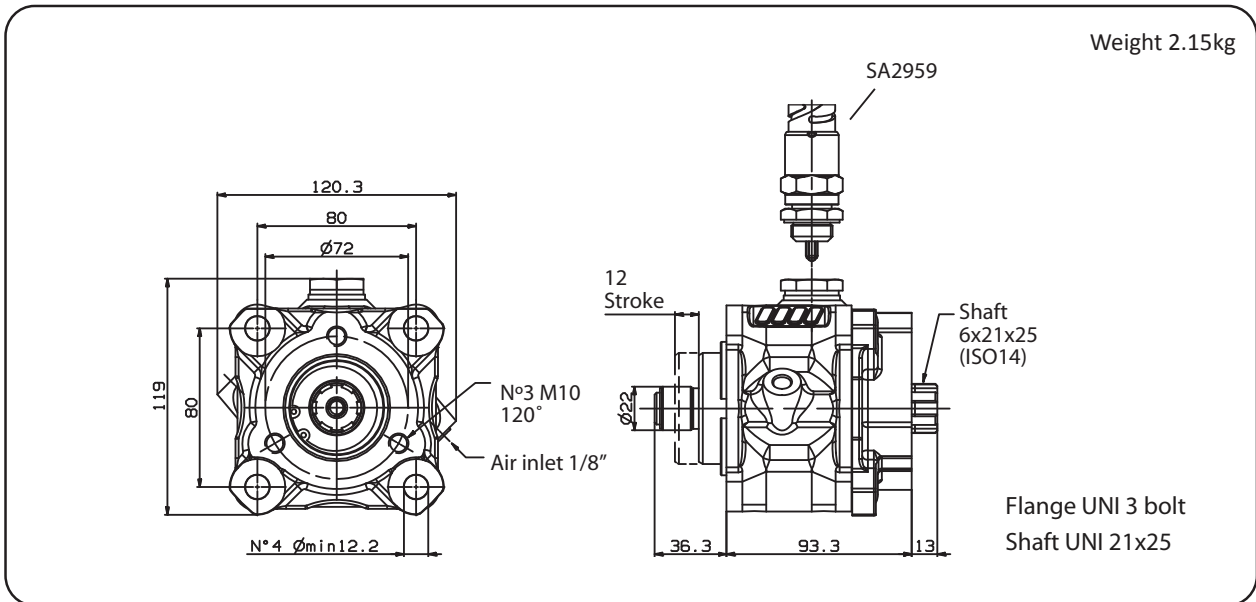
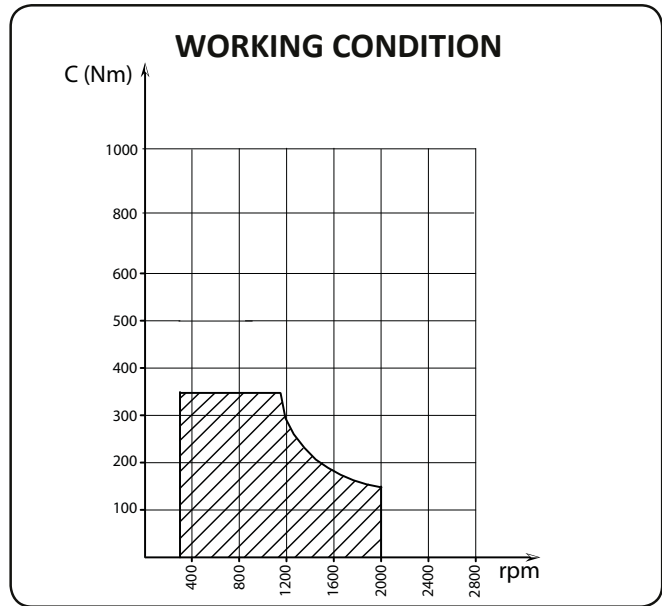
All dimensions are given in mm unless otherwise stated. Technical Specifications are subject to change without notice.

PTO - PT348



PKS9101/24 "ZF Ecosplit" containing:
PT348 PTO
SA3013 mounting kit
SA3003 quill shaft

PKS9103/23 "ZF 12AS Tronic" containing:
PT348 PTO
SA3013 mounting kit
SA3025 quill shaft

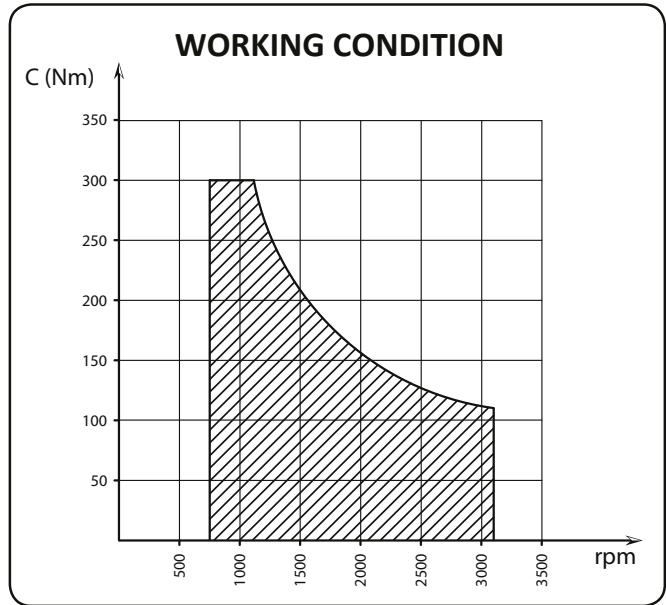


PTO Kit	PTO	Max Torque (Nm)	Mounting Side	Output	Rotation	Mounting Kit
PKS9101/24 PKS9103/23	PT348	350	Rear	Rear	Clockwise	SA3013

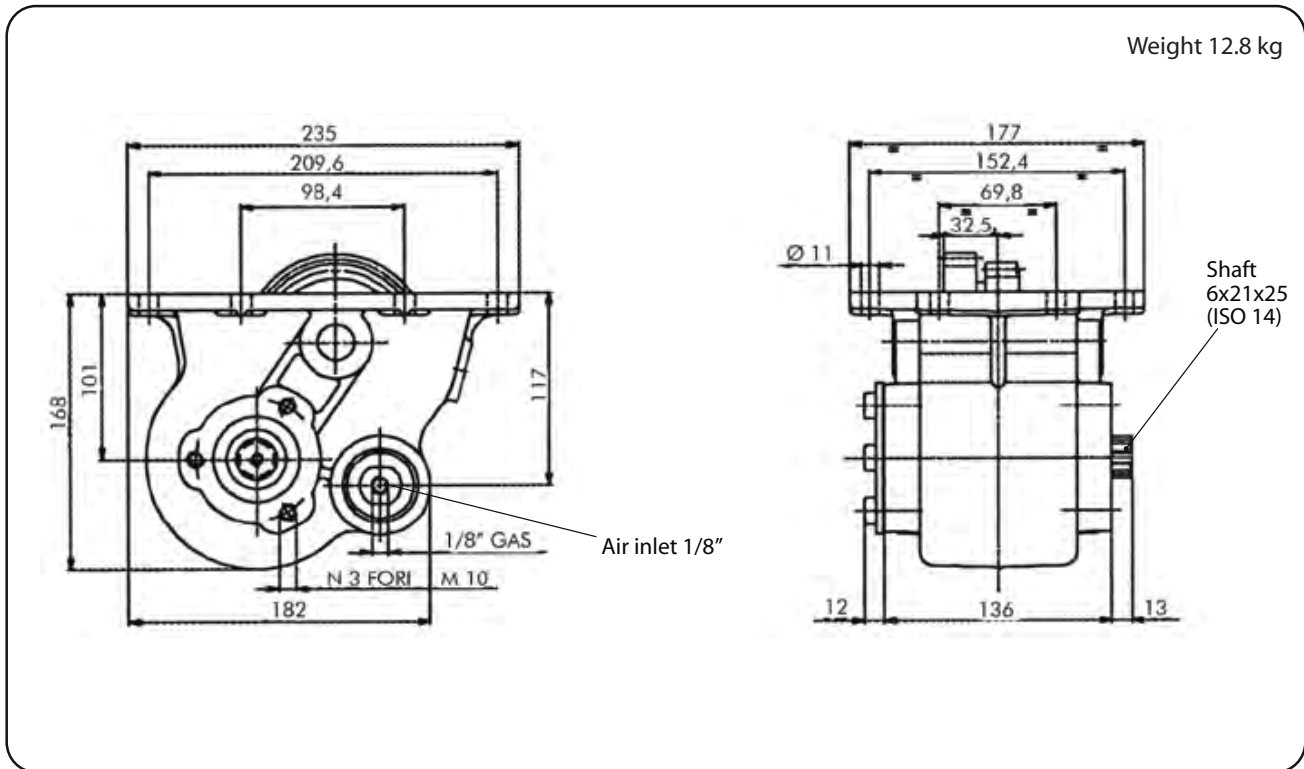
All dimensions are given in mm unless otherwise stated. Technical Specifications are subject to change without notice.

Fuller 14613 Roadranger: Low Speed Range 4 Bolt - PT357

PT357 PTO



Weight 12.8 kg



PTO	Max Torque (Nm)	Mounting Side	Output	Rotation	Mounting Kit
PT357	300	Lower	Rear	Clockwise	SA3052

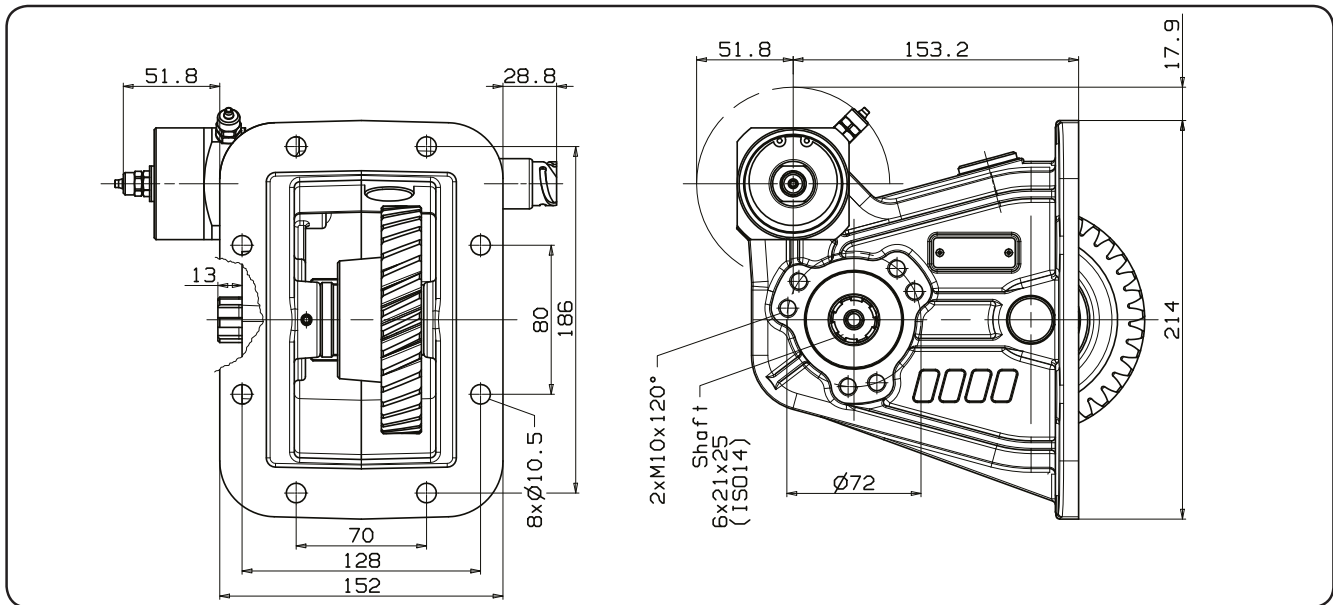
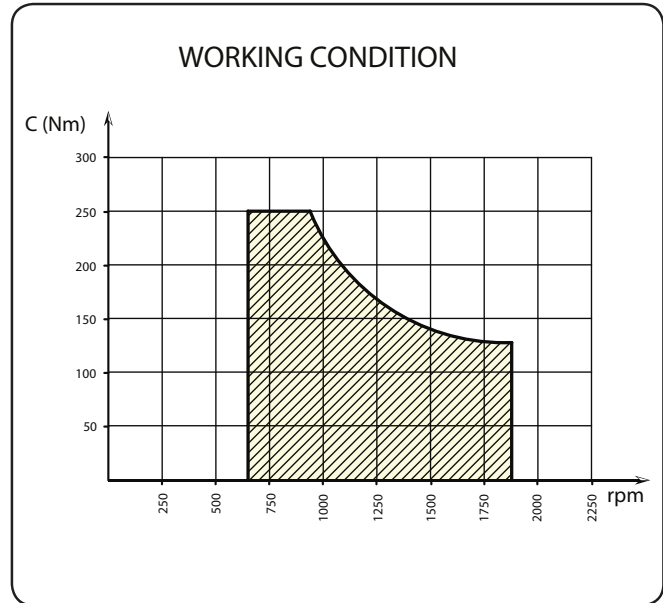
Order mounting kit separately

All dimensions are given in mm unless otherwise stated. Technical Specifications are subject to change without notice.

PTO - Vacuum Clutch- PT369



PT369



TECHNICAL SPECIFICATION:

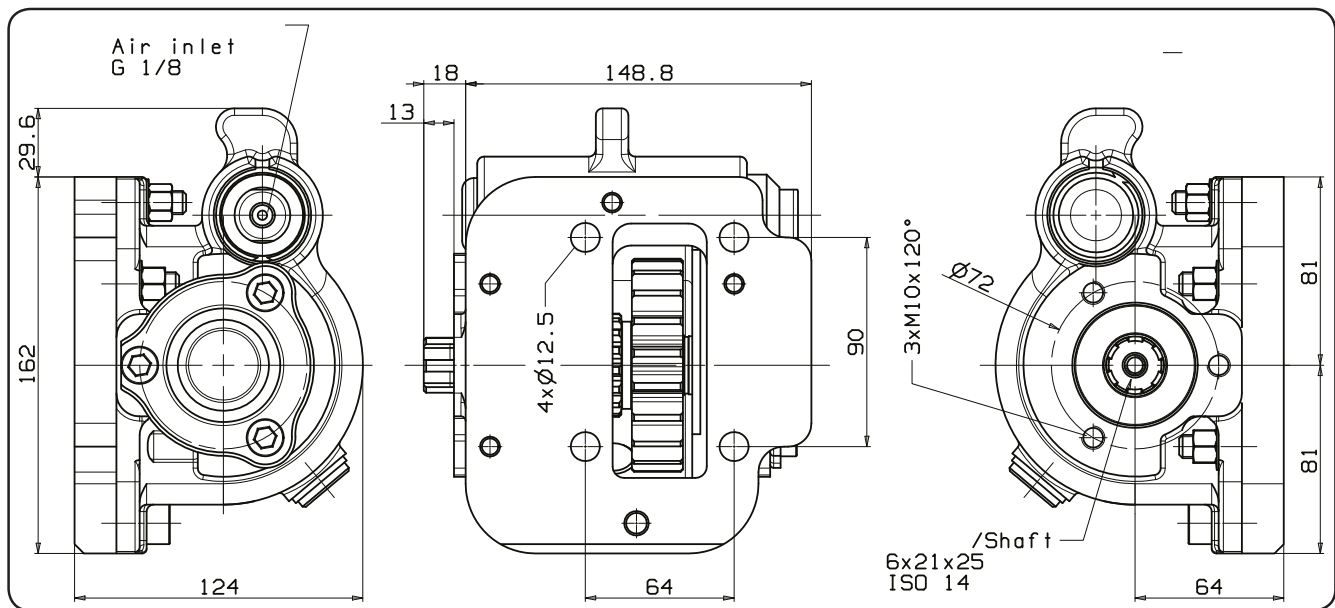
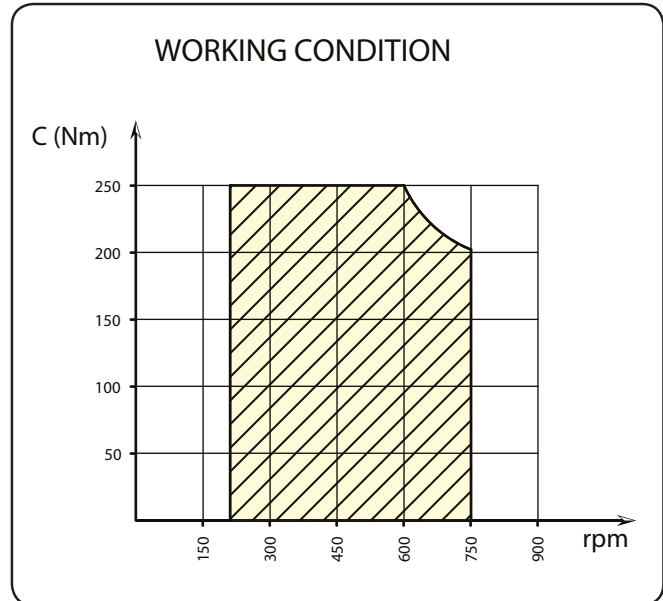
Gearbox:	Isuzu
Max torque:	250 Nm
Mounting side:	Side
Output:	Rear
Rotation:	Clockwise
Weight:	4kg

All dimensions are given in mm unless otherwise stated. Technical Specifications are subject to change without notice.

PTO - Clutch PTO - PT370



PT370



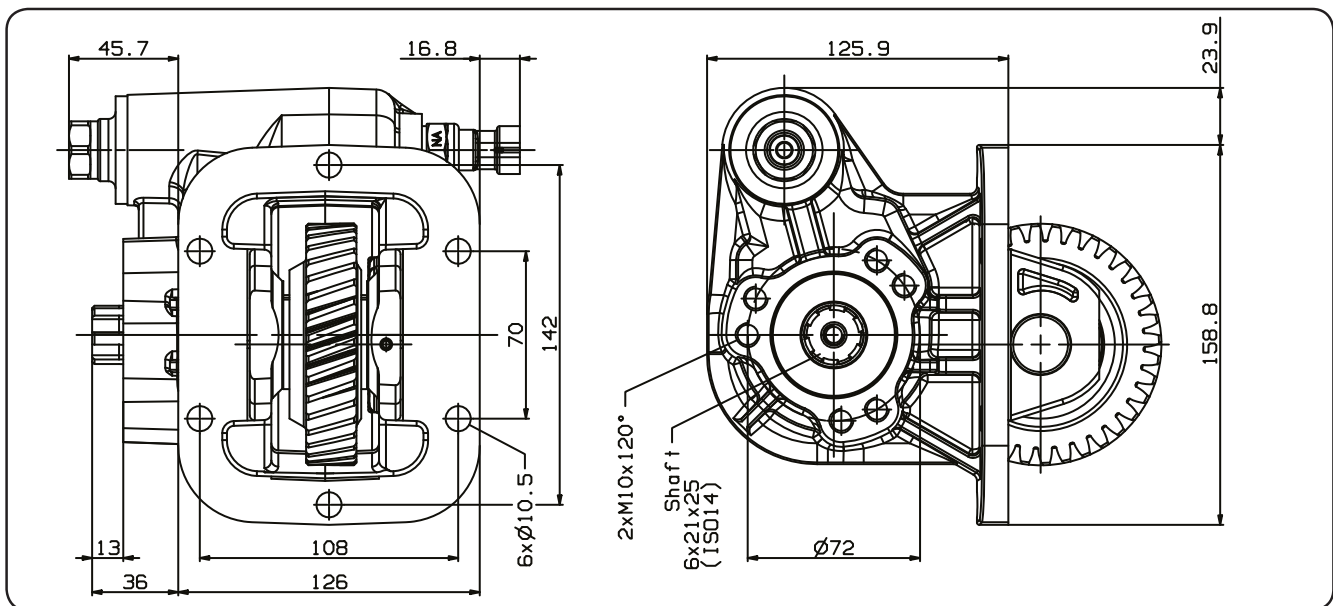
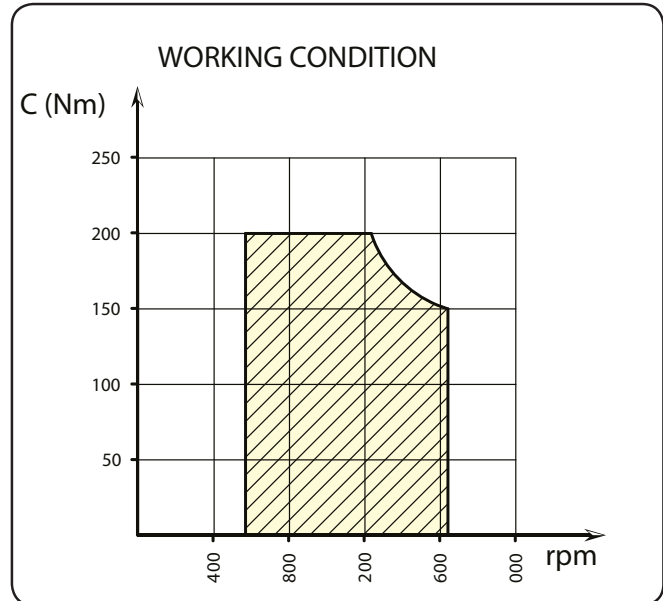
TECHNICAL SPECIFICATION:

Gearbox:	Nissan
Max torque:	250 Nm
Mounting side:	Side
Output:	Rear
Rotation:	Clockwise
Weight:	10.3kg

PTO - Clutch PTO - PT371



PT371

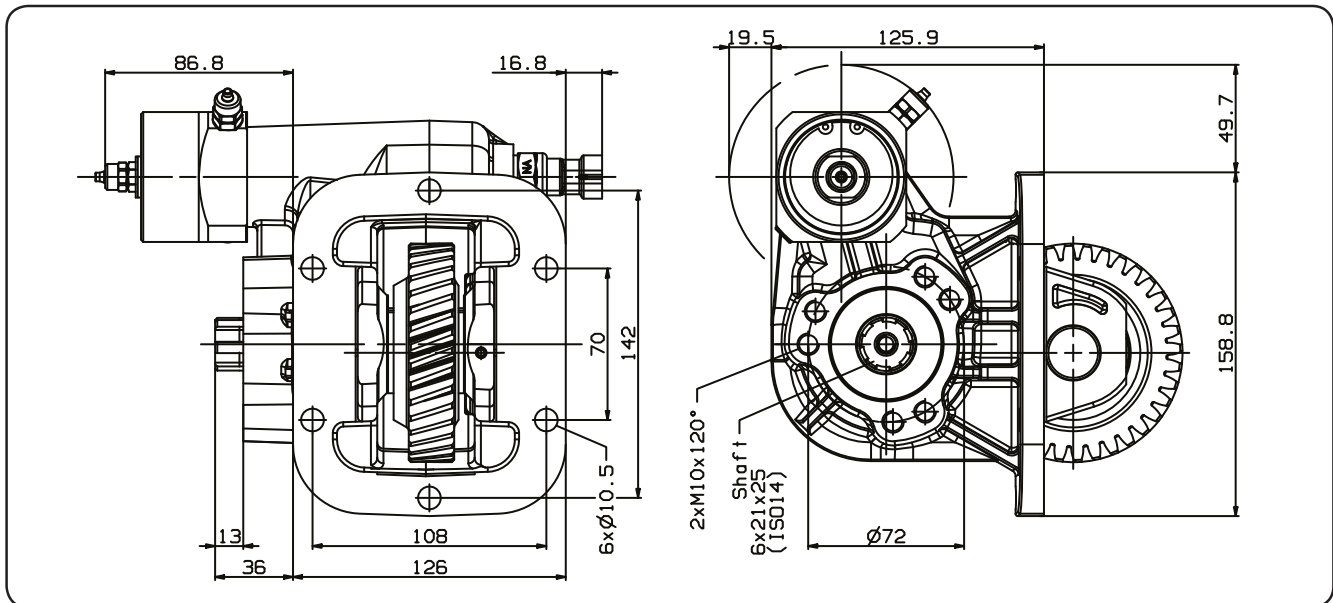
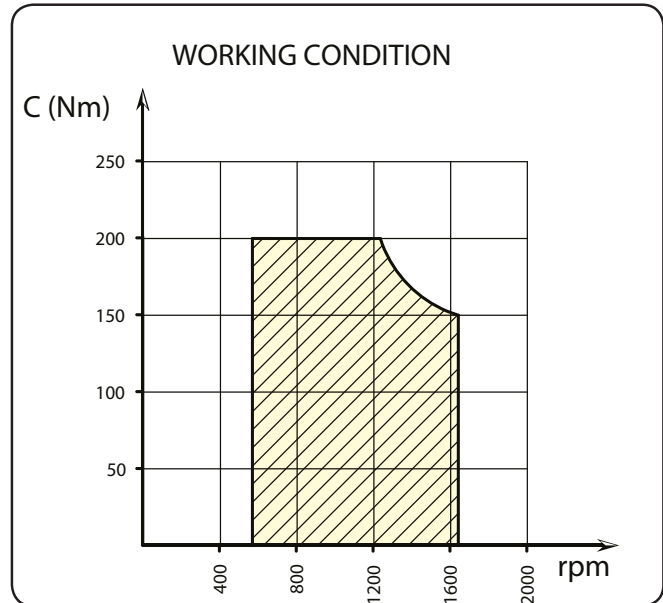
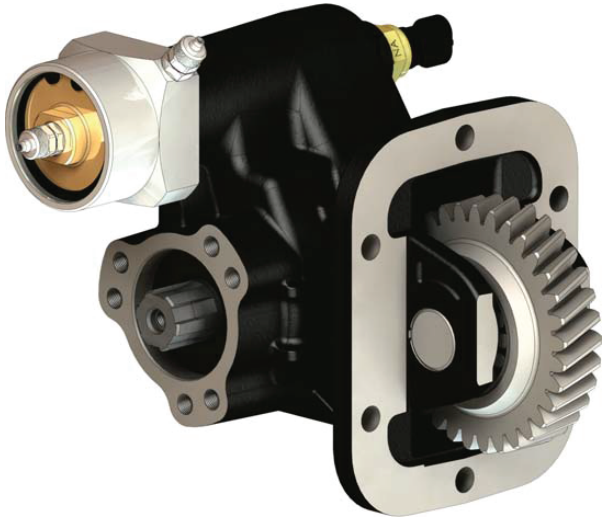


TECHNICAL SPECIFICATION:

Gearbox:	Isuzu
Max torque:	200 Nm
Mounting side:	Side
Output:	Rear
Rotation:	Clockwise
Weight:	8kg

All dimensions are given in mm unless otherwise stated. Technical Specifications are subject to change without notice.

PTO - Vacuum Clutch PTO - PT373

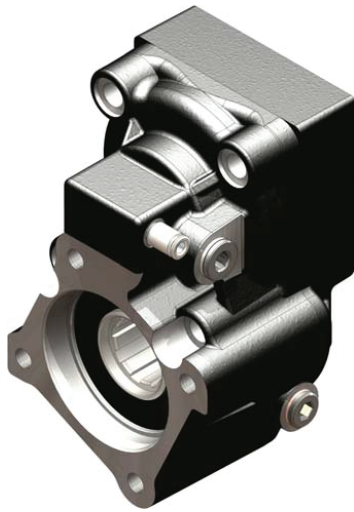


TECHNICAL SPECIFICATION:

Gearbox:	Isuzu - MYY/5T, 6P & 6S
Max torque:	200 Nm
Mounting side:	Side
Output:	Rear
Rotation:	Clockwise
Weight:	7.7kg

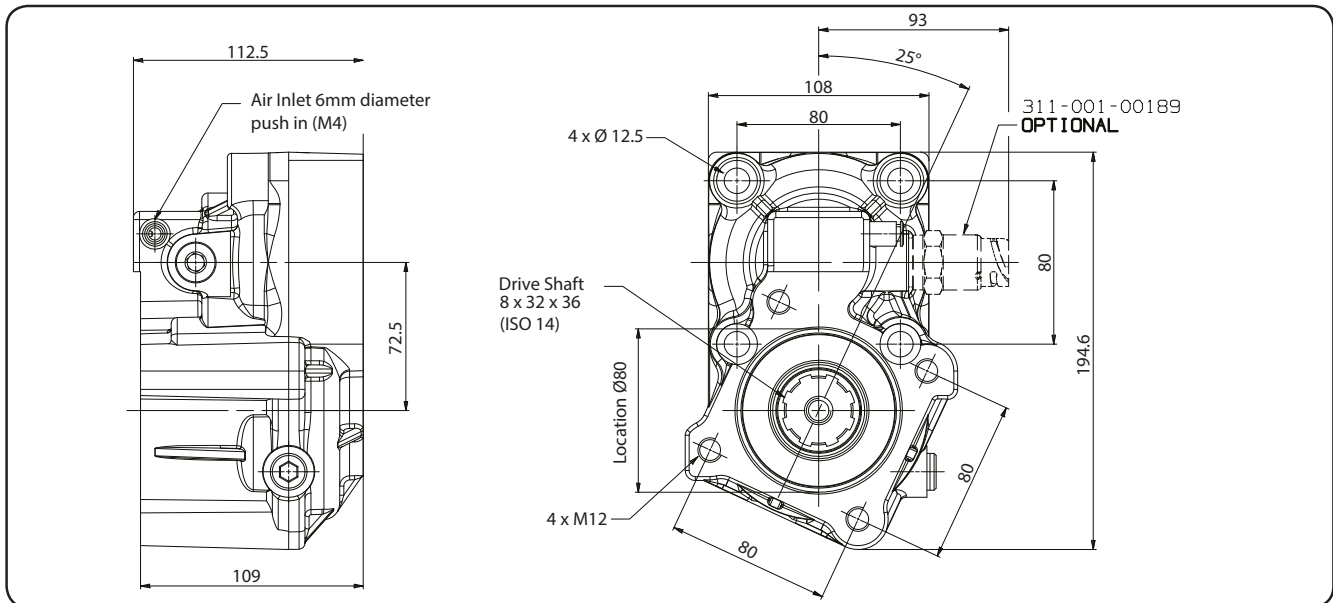
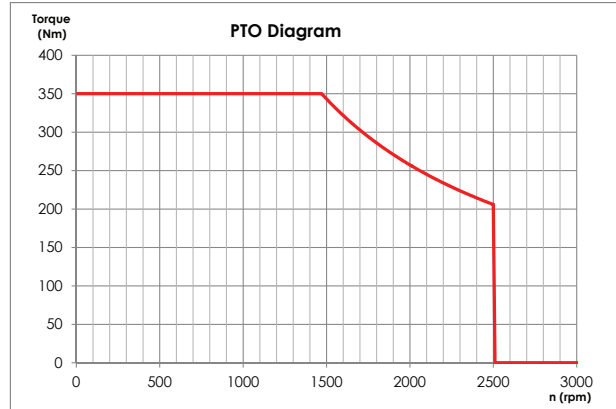
All dimensions are given in mm unless otherwise stated. Technical Specifications are subject to change without notice.

PTO - Pneumatic PTO - PT377



PT377

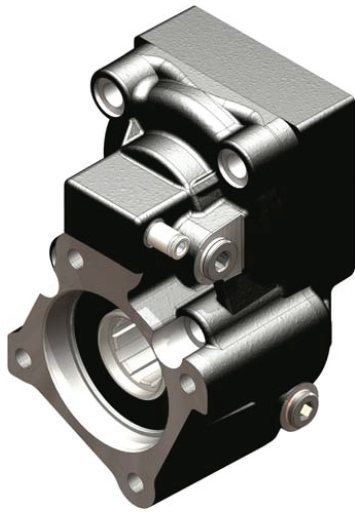
WORKING CONDITION



TECHNICAL SPECIFICATION:

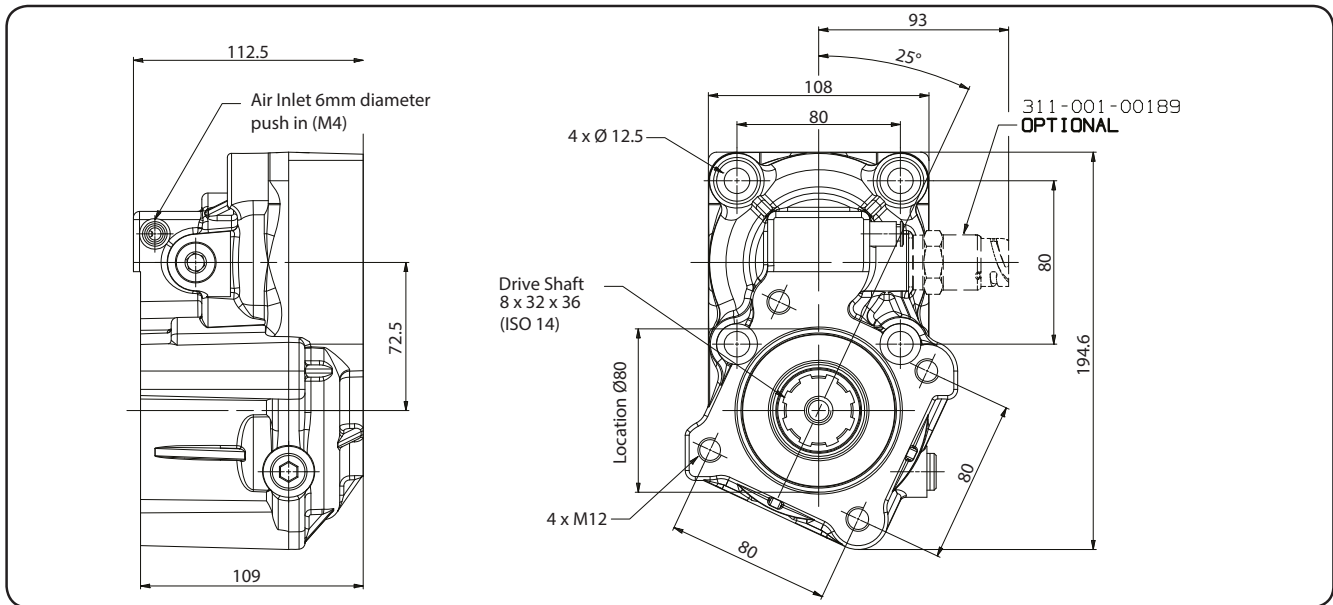
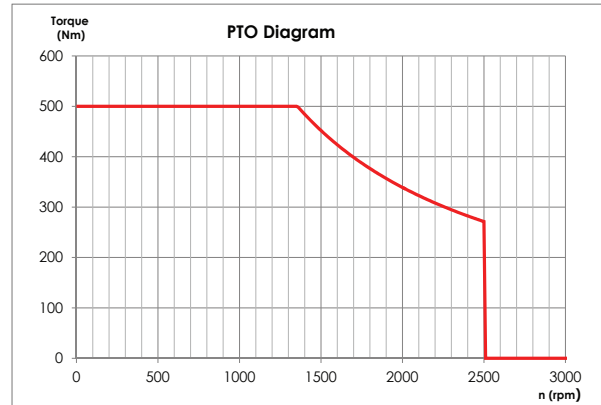
Gearbox:	Merc / Iveco / Eaton / ZF / Volvo
Max torque:	350 Nm
Mounting side:	Side
Output:	Rear
Rotation:	Anti Clockwise
Ratio:	1:1.8

PTO - Pneumatic PTO - PT378



PT378

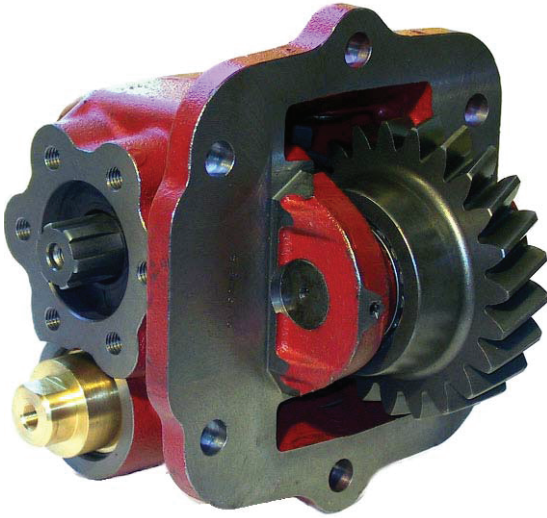
WORKING CONDITION



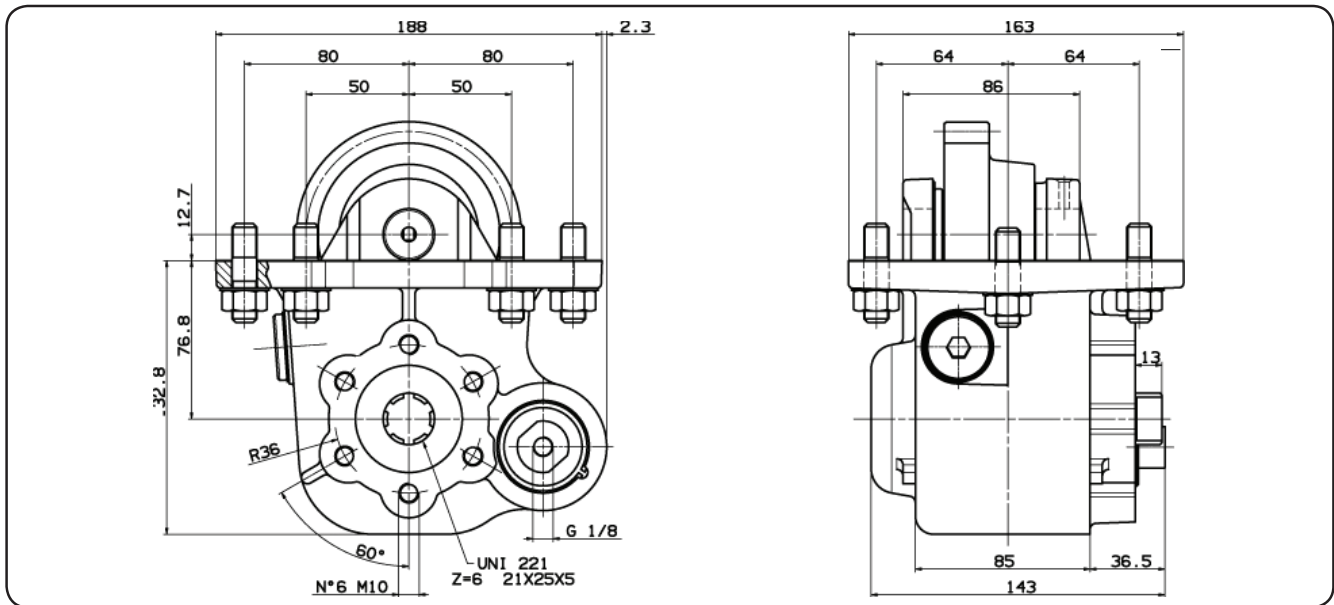
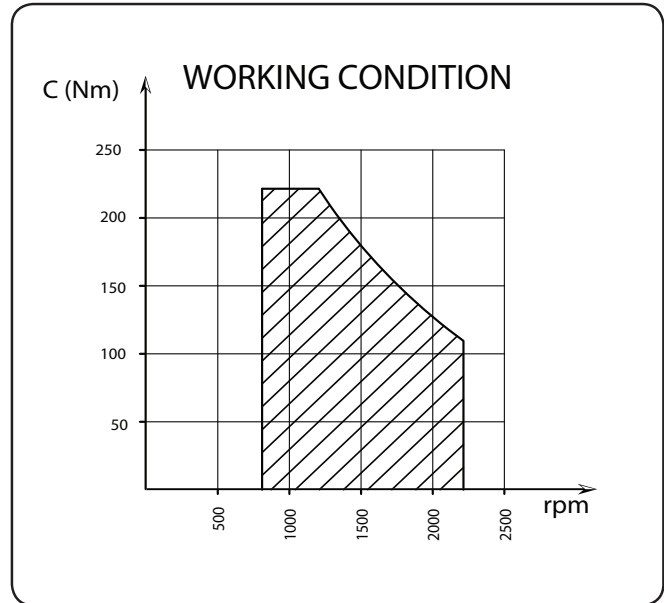
TECHNICAL SPECIFICATION:

Gearbox:	Merc / Iveco / Eaton / ZF / Volvo
Max torque:	500 Nm
Mounting side:	Side
Output:	Rear
Rotation:	Anti Clockwise
Ratio:	1:1

PTO - Clutch PTO - PT379



PT379



TECHNICAL SPECIFICATION:

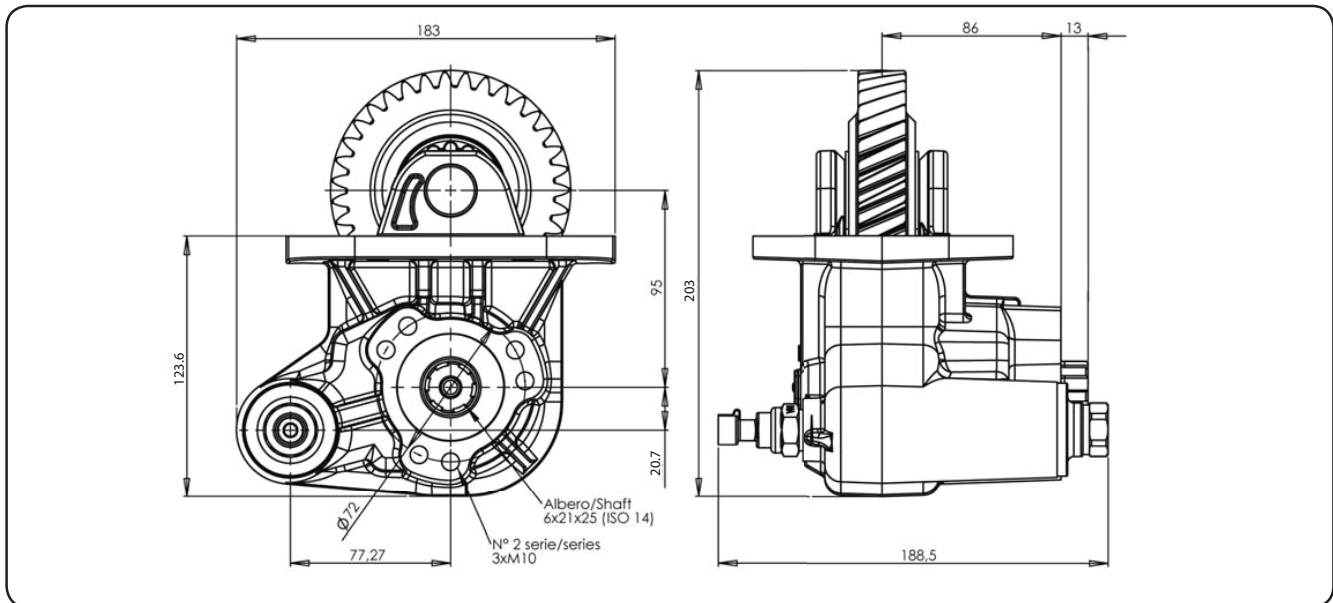
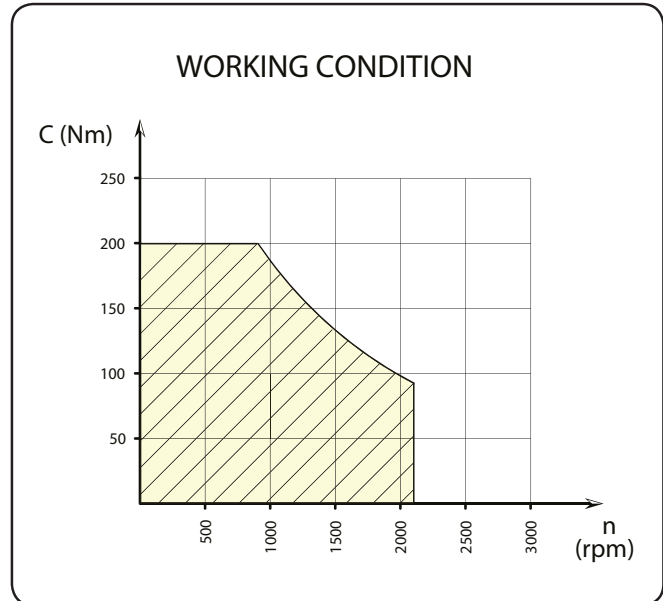
Gearbox:	Nissan
Max torque:	200 Nm
Mounting side:	Side
Output:	Rear
Rotation:	Clockwise
Weight:	10.3kg

Power Take Off Range

PTO - Mechanical Clutch PTO - PT380



PT380



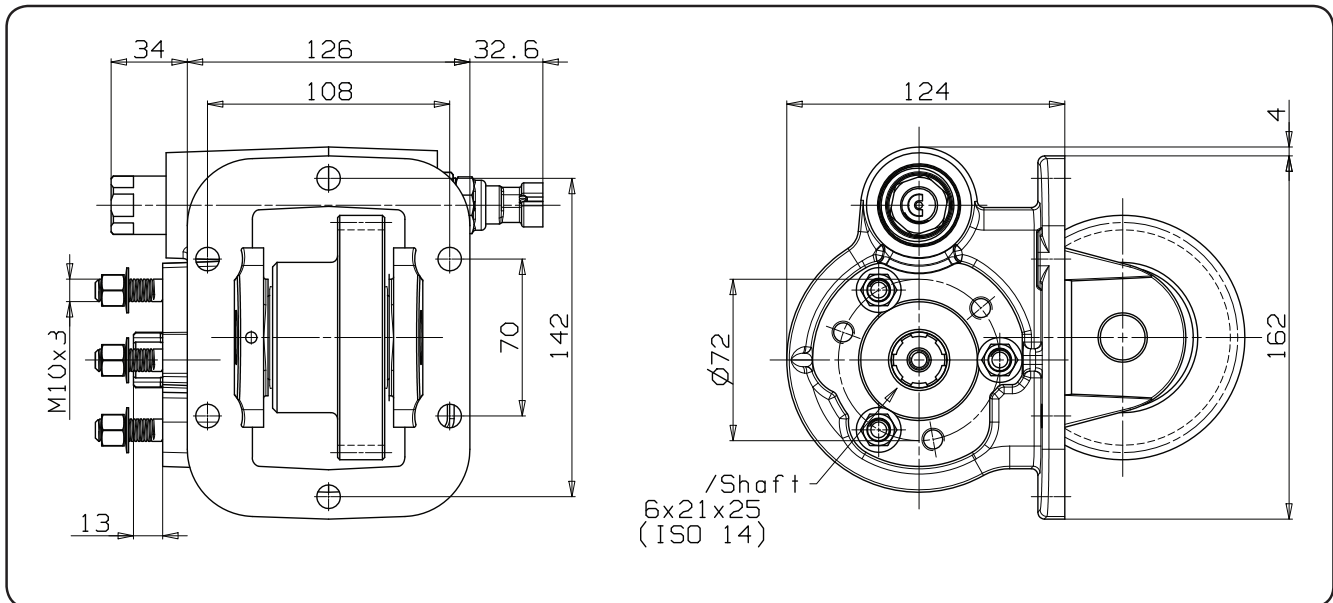
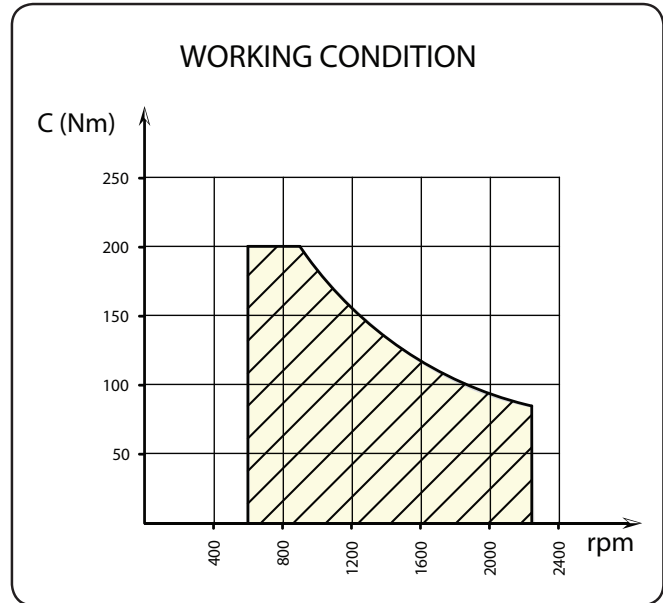
TECHNICAL SPECIFICATION:

Gearbox:	Nissan
Max torque:	200 Nm
Mounting side:	Side
Output:	Rear
Rotation:	Clockwise
Weight:	9.3kg

PTO - Mechanical Clutch PTO - PT381



PT381



TECHNICAL SPECIFICATION:

Gearbox:	Toyota
Max torque:	200 Nm
Mounting side:	Side
Output:	Rear
Rotation:	Clockwise
Weight:	11kg

Adaptor Guide: 3-bolt pump to 4-bolt PTO



To use a 3-bolt pump with a 4-bolt PTO supply together one option from both A & B as follows:

A - adaptor for 3-bolt pump to 4-bolt PTO:

Supply **SA2851** to suit supported fixed-wheel PTOs

Supply **SA2885** to suit loose wheel light duty PTOs (e.g. PBA160, PBA184, PBA186, etc)

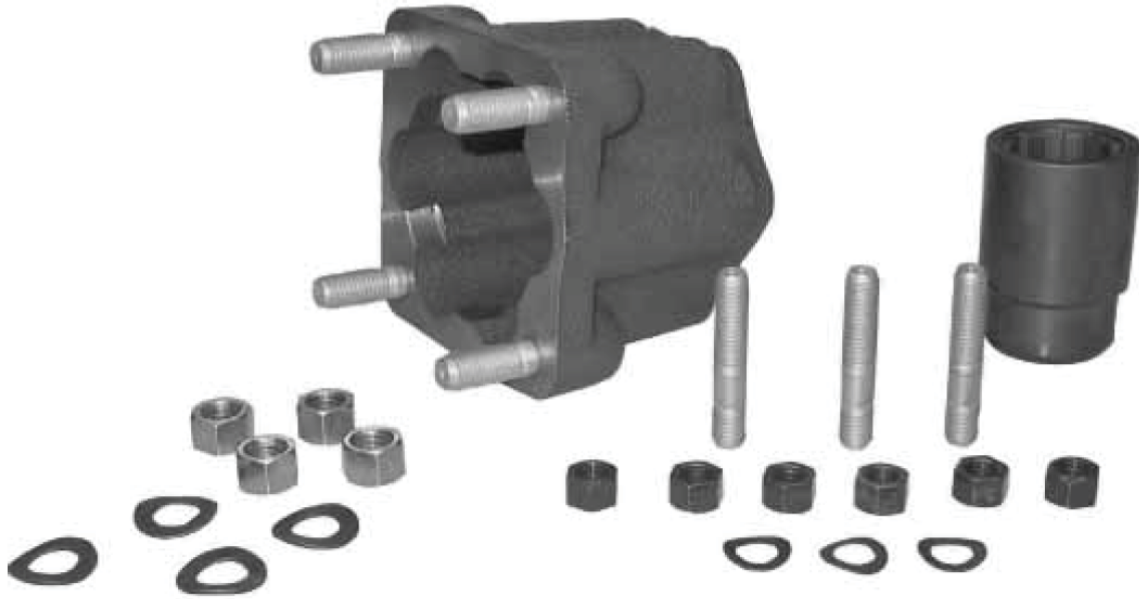
B - coupling adaptor for 3-bolt pump to 4-bolt PTO:

Supply **SA2767** to suit EGP025230 or EGP025170

Supply **SA2768** to suit EGP025150

All dimensions are given in mm unless otherwise stated. Technical Specifications are subject to change without notice.

Adaptor: 4-Bolt Pump to 3 Bolt Cast Iron PTO - SA2822/SA2823



Features:

- Only for use with Edbro Cast Iron PTO's (not for use with aluminium PTO's)
- Maximum torque:- 250 Nm
- SA2822 - coupling assembly
- SA2823 - mounting kit

Kit Contents:

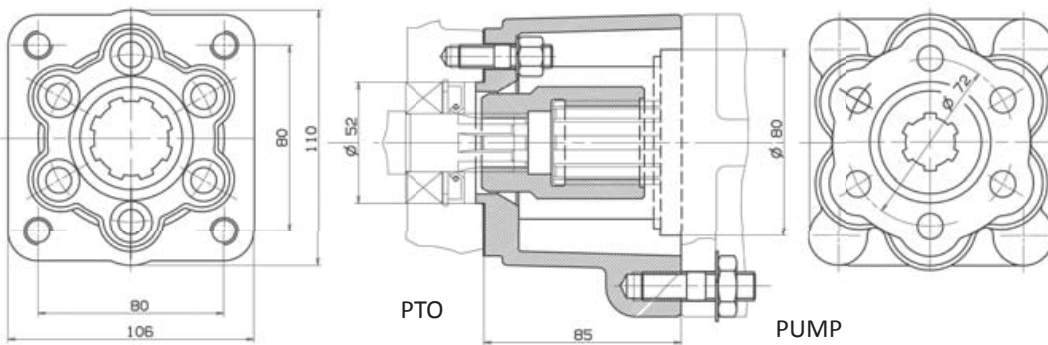
- SA2822-
Adaptor, PTO Mounting Kit, Coupling
- SA2823-
Pump Mounting Kit

All dimensions are given in mm unless otherwise stated. Technical Specifications are subject to change without notice.

Adaptor: 3 bolt PTO to 4 bolt Pump - SA3009



Adaptor UNI PTO (3 HOLES) / ISO (4 HOLES) PUMP



Features:

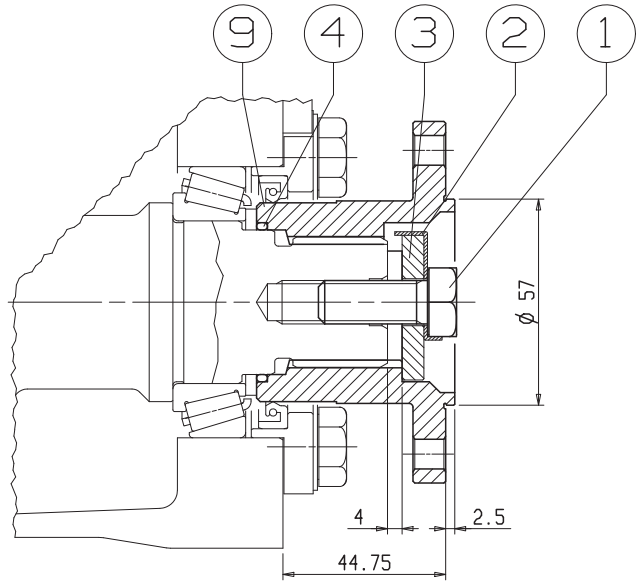
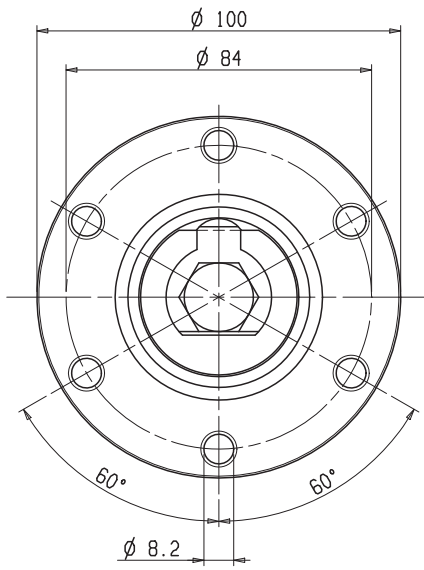
- Only for use with Edbro aluminium PTO's
- Maximum torque:- 250 Nm

Kit Contents:

- Adaptor
- Coupling
- PTO/Pump mounting kit

All dimensions are given in mm unless otherwise stated. Technical Specifications are subject to change without notice.

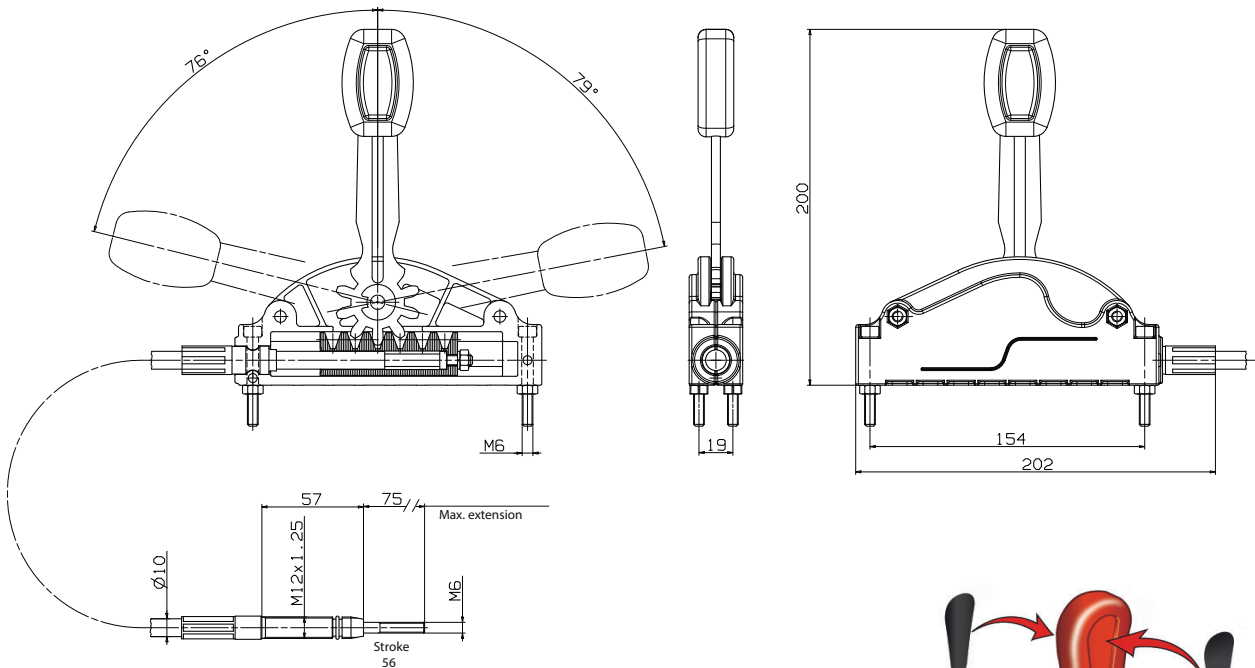
Flange Kit - SA2958



Pos.	Pieces	Denomination
1	1	Screw TE M 12x30 UNI 5739
2	1	Back-up washer M12
3	1	Flange locking washer
4	1	Gasket O-R 3156 FKM/FPM
9	1	Female flange 32x36 DIN 10

All dimensions are given in mm unless otherwise stated. Technical Specifications are subject to change without notice.

Manual Control Lever - PCL20xxxx



TECHNICAL FEATURES

- Stroke 56 mm
- Transmitted force: Pull 600 N/ Push 350 N
- Minimum sheath bending radius: 250 mm
- Lengths 0.7 - 9m available on application

PHISICAL FEATURES

- Body in glass-filled nylon.
- Pressed steel lever with corrosion protection.

This Remote control is suitable for moving mechanisms with relatively high loads.

Part No	Cable Length
PCL20/2500	2.5 m
PCL20/3000	3 m
PCL20/3500	3.5 m

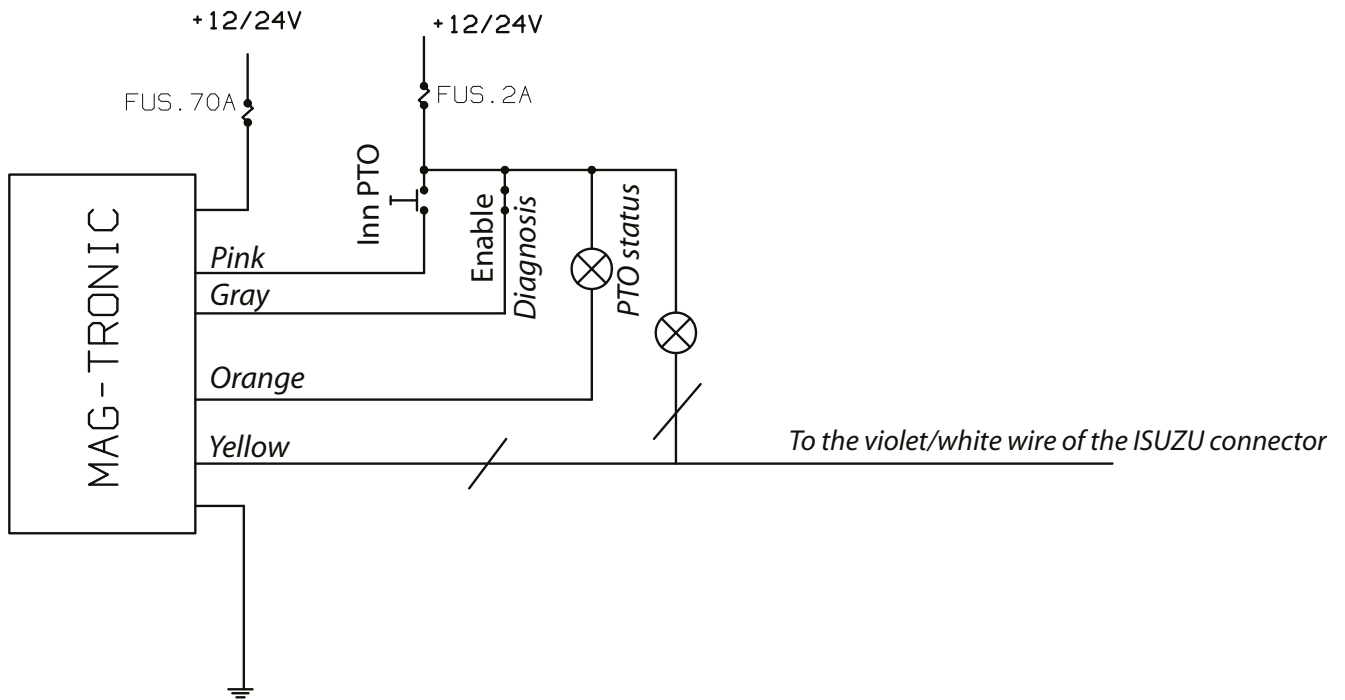
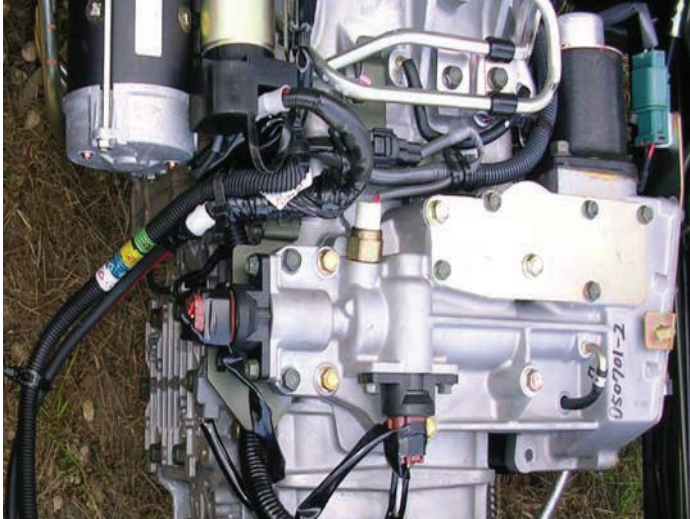
Suitable for control of manual valves and PTO's

PTO Wiring Kit - SA3050

SA3050 - Isuzu Wiring Kit Smoother Mag-Tronic PTO

GEARBOX ASSEMBLY

CAB INTERIOR



Power Take Off Range

All dimensions are given in mm unless otherwise stated. Technical Specifications are subject to change without notice.