

Knock-Off Valve - OV340H

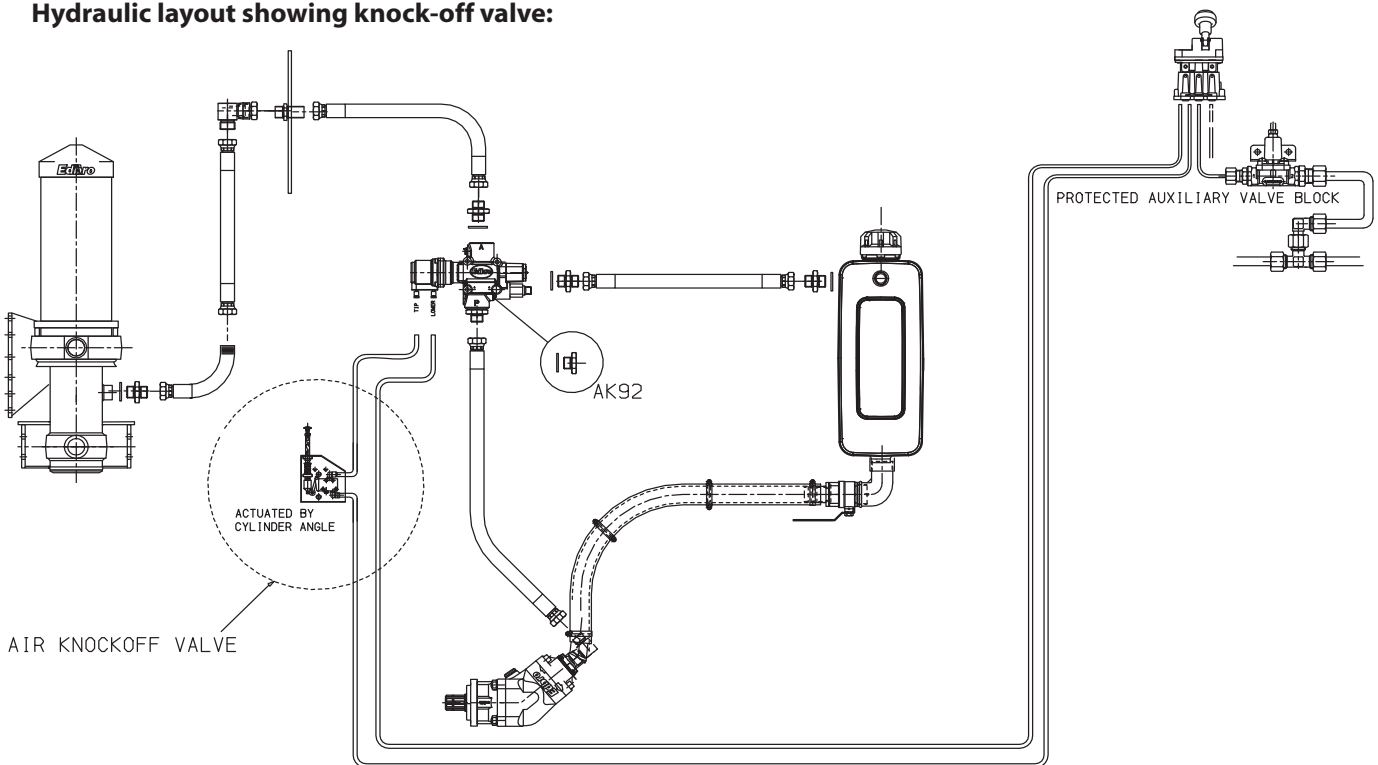
Pneumatic knock-off valve designed to restrict end of stroke tipping and control angle of tip.



Part numbers:

- OV340HA ¼" push-in air fitting
- OV340HM 6mm push-in air fitting

Hydraulic layout showing knock-off valve:



All dimensions are given in mm unless otherwise stated. Technical Specifications are subject to change without notice.