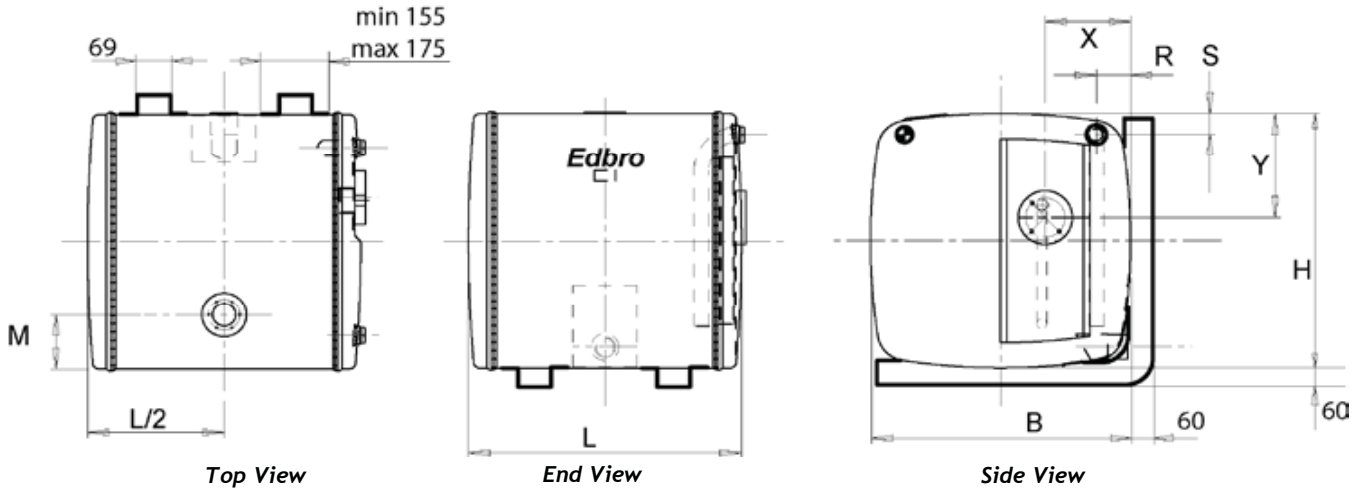




**Edbro Oil Tanks are available in both aluminium and steel with a range of sizes and designs to suit all applications.**

**Special tanks are available upon request with custom tanks built to order.**

**Oil Tanks: Side Mount**



features

- Side mounted to chassis
- High quality steel or aluminium options
- 1.5" BSP Feed port to rear of tank
- 1" BSP Auxiliary return Port  
(except OT543/53, OT545/78)
- Integral oil level sight glass
- Finished in chassis grey superior primer
- Pressure tested
- Compatible with Edbro valve CT200

Part Number	Dimensions (mm)								Total Capacity (litres)	Useable Capacity (litres)	Material	Mass (kg)	Bracket Kit	Mass (inc kit) (kg)
	H*	B	L**	X	Y	R	S	M						
<b>TANKS AVAILABLE EX-STOCK</b>														
OT543/53	530	430	370	215	265	‡	‡	215	74	53	Steel	20	TH54	34
OT664/130 ***	630	690	400	N/A	N/A	N/A	N/A	50	157	130	Steel	36	TH664/P	58
OT674/135	610	720	430	360	200	80	50	130	170	135	Steel	36	TH674/P	58
OT676/200	610	720	640	360	200	80	50	130	272	200	Steel	47	TH675/P	69
OT724A	720	720	385	N/A	N/A	N/A	N/A	55	185	135	Steel	40	N/A(Included)	67
<b>TANKS AVAILABLE TO ORDER</b>														
OT545/78	530	430	540	215	265	‡	‡	215	108	78	Steel	27	TH54	39
OT665/135	610	610	530	200	250	80	50	130	177	135	Steel	30	TH66/P	52
OT666/165	610	610	640	200	250	80	50	130	214	165	Steel	42	TH66/P	64
OT675/165	610	720	520	360	200	80	50	130	205	165	Steel	43	TH675/P	65

**NOTES:**

- All tanks are optionally supplied with separate oil filler/air breather AF97
- \* Add 65mm for filler cap
- When remotely mounting the valve from the tank, the following parts are required:  
DPP45F washer, NR994 plug
- All tanks standard brackets: steel supports finished with painted steel straps
- \*\* Add maximum 20mm/25mm for valve plate on steel and aluminium tanks respectively, plus 80mm for valve and bolts
- ‡ Not a feature of these tanks
- \*\*\* No valve mounting block fitted

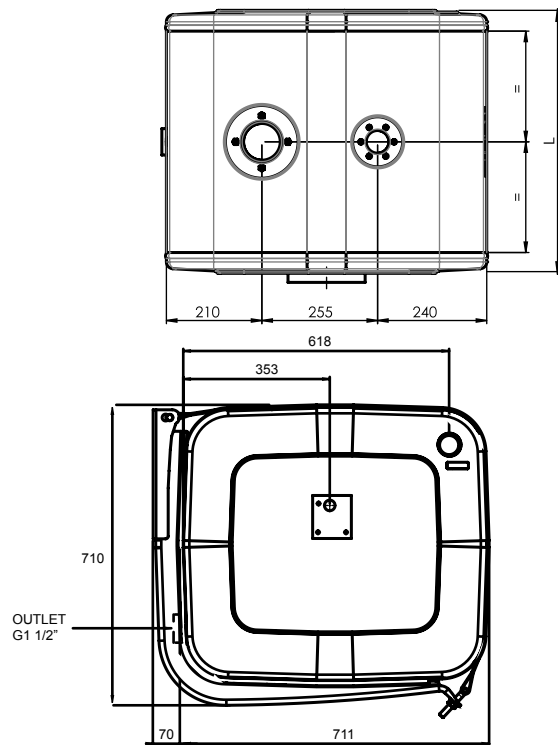
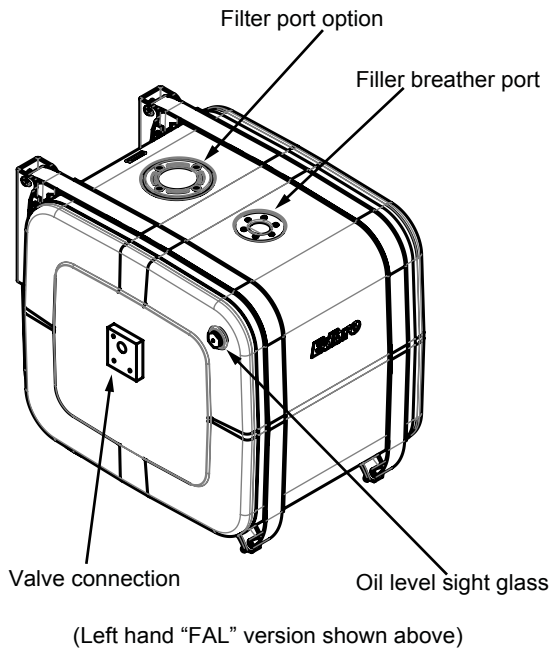
**TANK CAPACITY:**

- Total capacity is the amount of oil to fill the tank and leave 50mm air gap above the oil.
- Useable capacity is calculated assuming:  
a minimum of 100mm oil depth left at the bottom of the tank when empty.  
the air gap of 50mm above the oil when the tank is full.

**TANK SELECTION:**

- Select a tank that has a useable capacity greater than the swept volume of the cylinder.

**Oil Tanks: Side Mount Aluminium**



features

Highly polished aluminium finish  
1.5" BSP Female Feed port  
Port for optional filter

Universal bracket hole pattern  
Pressure tested  
Integral valve plate for Edbro CT200 valve  
Steel brackets with SS straps

Part Number TANKS AVAILABLE EX-STOCK		Dimensions (mm)	Total Capacity (litres)	Useable Capacity (litres)	Mass (inc kit) (kg)
RIGHT HAND	LEFT HAND	L			
OT674FAR/130	OT674FAL/130	400	150	130	42
OT675FAR/160	OT675FAL/160	500	200	160	44
OT676FAR/195	OT676FAL/195	600	250	195	46

**NOTES:**

All tanks are optionally supplied with separate oil filler/air breather AF97  
Add 65mm for filler cap  
When remotely mounting the valve from the tank, the following parts are required:  
DPP45F washer, NR994 plug

Add 105mm for valve assembly

Valve connection:  
CT200 valve

OPTIONAL FILTERS			
Part Ref.	Max. Flow (l/min.)	Filtration (µm)	Connection
PM643	200	60	G1"
PM642	160	25	G1"
PM476	200	25	G1"
PM627	200	25	G1 1/4"

**TANK CAPACITY:**

Total capacity is the amount of oil to fill the tank and leave 90mm air gap above the oil.

Useable capacity is calculated assuming:  
a minimum of 100mm oil depth left at the bottom of the tank when empty and an air gap of 90mm above the oil when the tank is full.

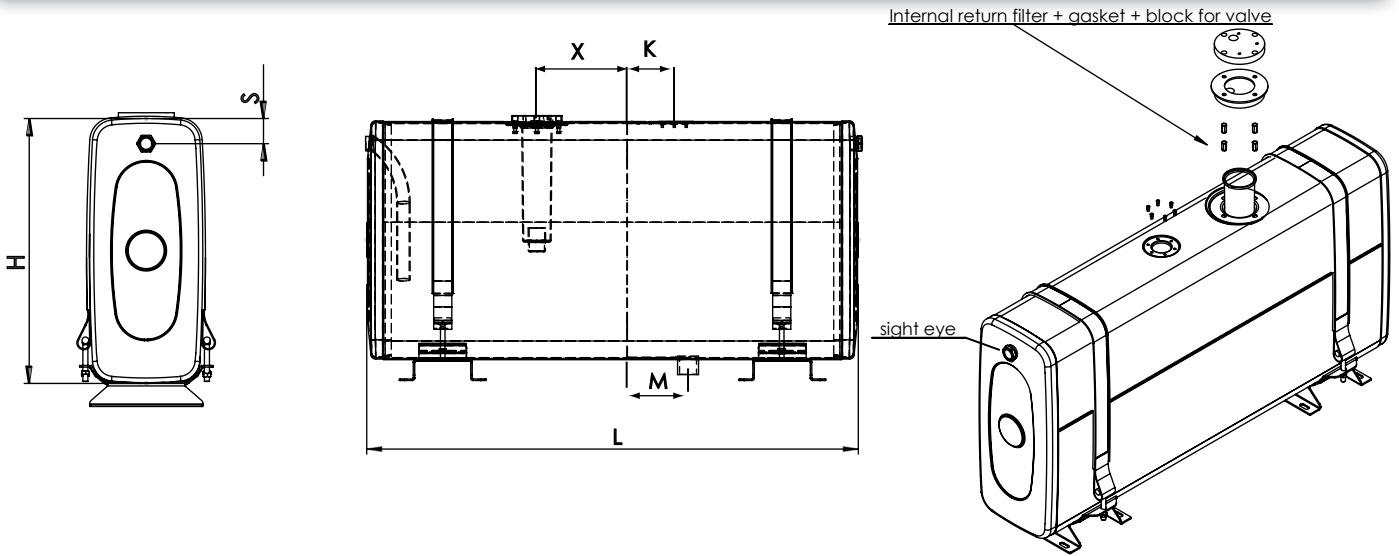
**TANK SELECTION:**

Select a tank that has a useable capacity greater than the swept volume of the cylinder.

All dimensions are given in mm unless otherwise stated. Technical Specifications are subject to change without notice.

Rev 2, Dec 2014

**Oil Tanks: Rear Mount Tractor Chassis**



Features

Top mounted valve plate for easy maintenance  
Compatible with Edbro valve CT200  
Integral oil level sight glass  
Steel tanks finished in chassis grey superior primer  
Integral stainless steel return filter 60 micron

Aluminium tanks have a high quality polished finish  
1.5" BSP feed ports  
Auxiliary 1" BSP return port with plug fitted  
Pressure tested  
Internally cleaned

Part Number	Dimensions (mm)							Total capacity (litres)	Useable capacity (litres)	Material	Mass (kg)
	H *	B	L	X	S	M	K				
<i>TANKS AVAILABLE EX-STOCK</i>											
OT6211F/135	630	270	1150	200	60	200	100	165	135	Steel	44
OT6213F/155/01	630	270	1300	200	60	200	100	185	155	Steel	50
OT6216F/193	630	270	1650	200	60	200	100	235	193	Steel	58
OT6213AF/155/01	630	270	1300	200	60	200	100	185	155	Aluminum	29

**Additional required parts:** (not supplied with oil tank)  
AF97 oil filler breather (\*add 65mm to H dimension for filler cap)  
1x TMK2 tank washer kit required

**Remote Valve Mounting:**

When remotely mounting the valve from the tank, the following parts are required:  
DPP45F washer  
NR994 plug

\*Add to dimension H max 20mm for valve plate, plus 80mm for valve and bolts

**Filter:**

If Part Number has F, the tank has an integral filter.

**Tank selection:**

Select a tank that has a useable capacity greater than the swept volume of the cylinder/working volume of the application.

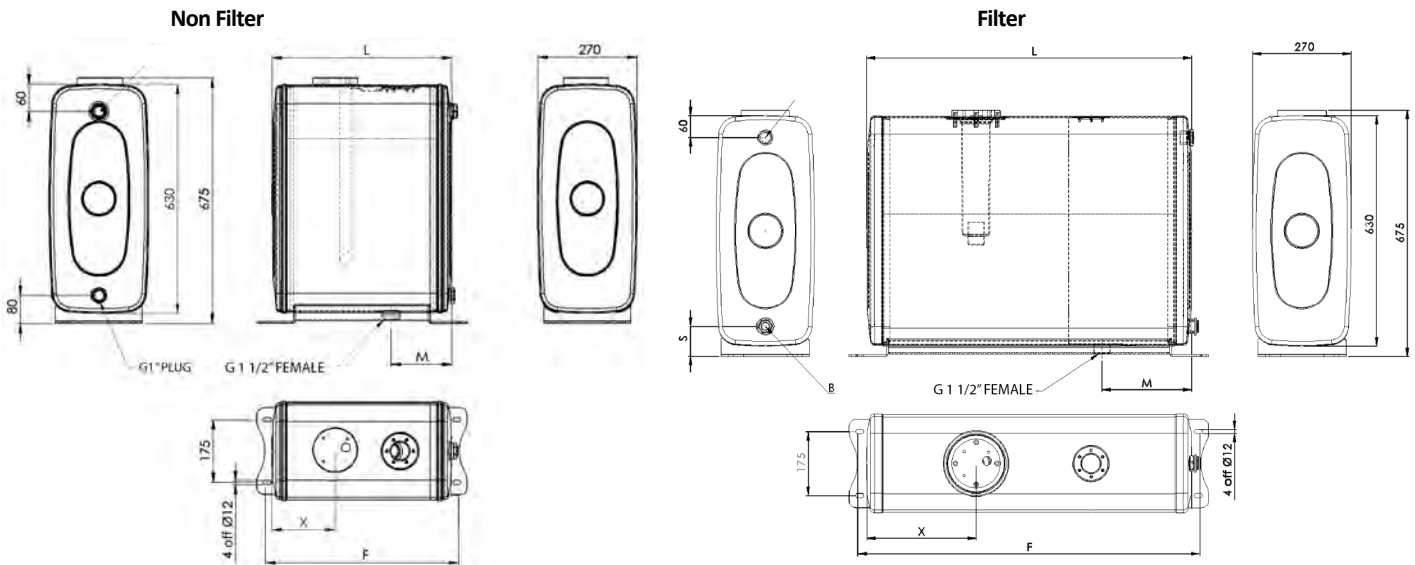
**Tank Capacity:**

Total capacity is the amount of oil to fill the tank and leave 50mm air gap above the oil. Useable capacity is calculated assuming:

A minimum of 100mm oil depth left at the bottom of the tank when empty.

The air gap of 50mm above the oil when the tank is full.

### Oil Tanks: Rear Mount Rigid Chassis



**Features**

1.5" BSP Feed port to bottom of tank  
 1" BSP Auxiliary return Port  
 Compatible with Edbro valve CT200  
 Optional integral stainless steel return filter  
 60 micron

Finished in chassis grey superior primer  
 Pressure tested  
 Integral oil level sight glass  
 Internally cleaned

Part Number **	Dimensions (mm)						Total capacity (litres)	Useable capacity (litres)	Material	Integral Filter	Mass (kg)
	H *	F	L	X	S	M					
<i>TANKS AVAILABLE EX-STOCK</i>											
OT635/60/01	630	538	500	165	N/A	170	70	60	Steel	No	25
OT635F/60/01	630	538	500	165	N/A	170	70	60	Steel	Yes	25
OT637/84/01	630	738	700	175	80	250	100	84	Steel	No	30
OT637F/84/01	630	738	700	175	80	250	100	84	Steel	Yes	30
OT639/105/01	630	938	900	250	80	350	130	105	Steel	No	35
OT639F/105/01	630	938	900	250	80	350	130	105	Steel	Yes	35

**Additional required parts:** (not supplied with oil tank)  
 AF97 oil filler breather (\*add 65mm to H dimension for filler cap)  
 TMK1 tank washer kit

**Remote Valve Mounting:**

When remotely mounting the valve from the tank, the following parts are required:

- DPP45F washer
- NR994 plug

\*Add to dimension H max 20mm for valve plate, plus 80mm for valve and bolts

**Support Brackets:**

\*\*\*Optional support brackets are not supplied with oil tank but are available

**Tank selection:**

Select a tank that has a useable capacity greater than the swept volume of the cylinder/working volume of the application.

**Tank Capacity:**

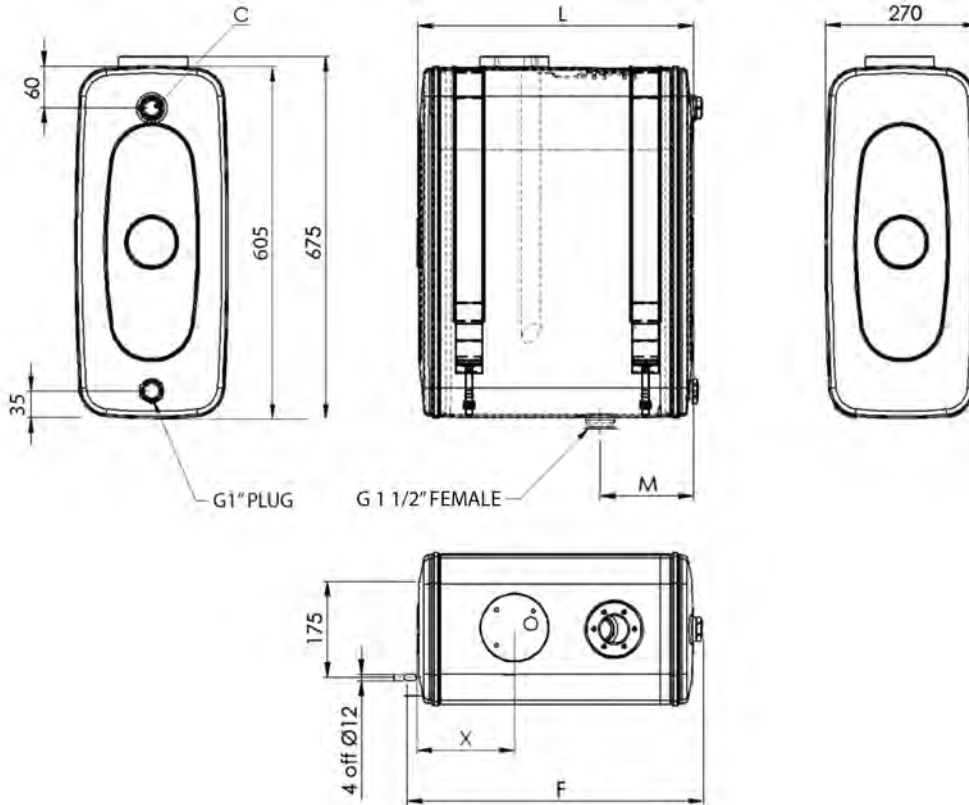
Total capacity is the amount of oil to fill the tank and leave 50mm air gap above the oil. Useable capacity is calculated assuming:

A minimum of 100mm oil depth left at the bottom of the tank when empty.

The air gap of 50mm above the oil when the tank is full.

**OIL TANK : Rear Mount Rigid Chassis Complete with Straps**

- \* 1.5" BSP feed port to bottom of tank
- \* 1" BSP auxiliary return port
- \* Compatible with EDBRO valve CT200
- \* Optional integral stainless steel return filter 60 micron
- \* Finished in chasses grey superior primer
- \* Pressure tested
- \* Integral oil level sight glass
- \* Internally cleaned



Part Number **	Dimensions (mm)					Total capacity (litres)	Useable capacity (litres)	Material	Integral Filter	Mass (kg)
	L	F	X	S	M					
<i>TANKS AVAILABLE EX-STOCK</i>										
OT639NB/105/01	900	938	250	80	350	130	105	Steel	No	31
OT637NB/84/01	700	738	175	80	250	100	84	Steel	No	30

**Additional required parts:** (not supplied with oil tank)  
 AF97 oil filler breather (\*add 65mm to H dimension for filler cap)  
 6959999004 tank washer kit

**Remote Valve Mounting:**  
 When remotely mounting the valve from the tank, the following parts are required:  
 DPP45F washer  
 NR994 plug  
 \*Add to dimension H max 20mm for valve plate, plus 80mm for valve and bolts

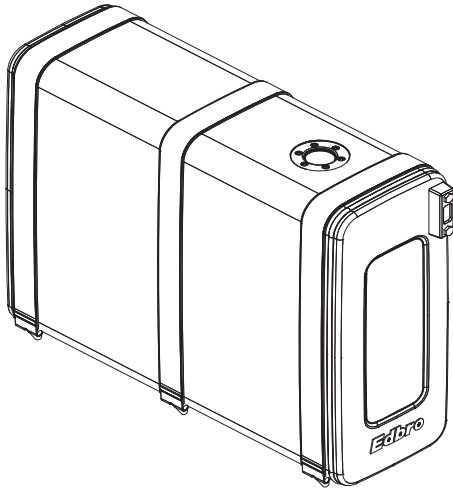
**Support Brackets:**  
 \*\*\*Optional support brackets are not supplied with oil tank but are available

**Tank selection:**  
 Select a tank that has a useable capacity greater than the swept volume of the cylinder/working volume of the application.

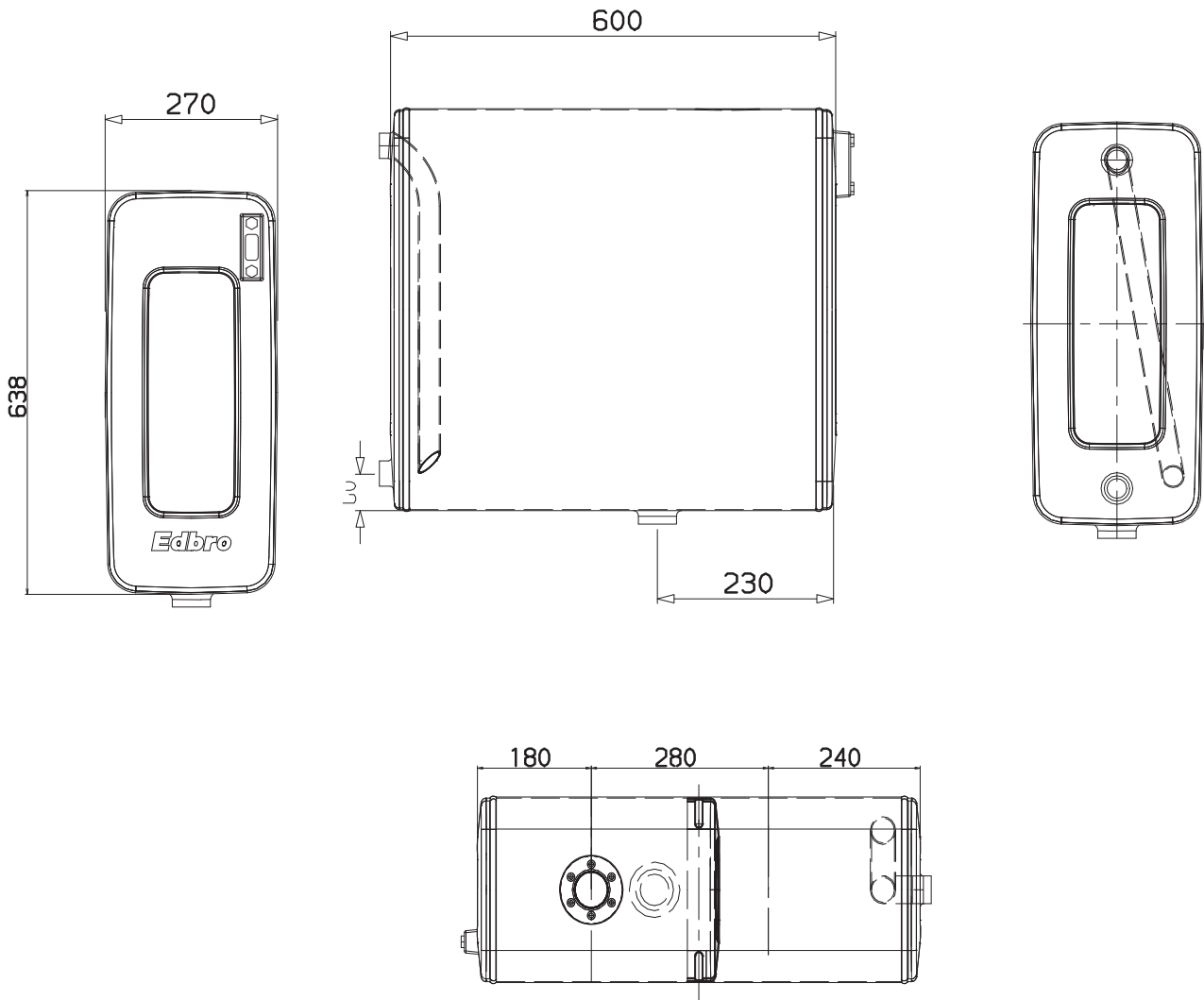
**Tank Capacity:**  
 Total capacity is the amount of oil to fill the tank and leave 50mm air gap above the oil. Useable capacity is calculated assuming:  
 A minimum of 100mm oil depth left at the bottom of the tank when empty.  
 The air gap of 50mm above the oil when the tank is full.

*All dimensions are given in mm unless otherwise stated. Technical Specifications are subject to change without notice.*

**Aluminium Oil Tank: Rear Mount for Rigid Trucks - OTA604**



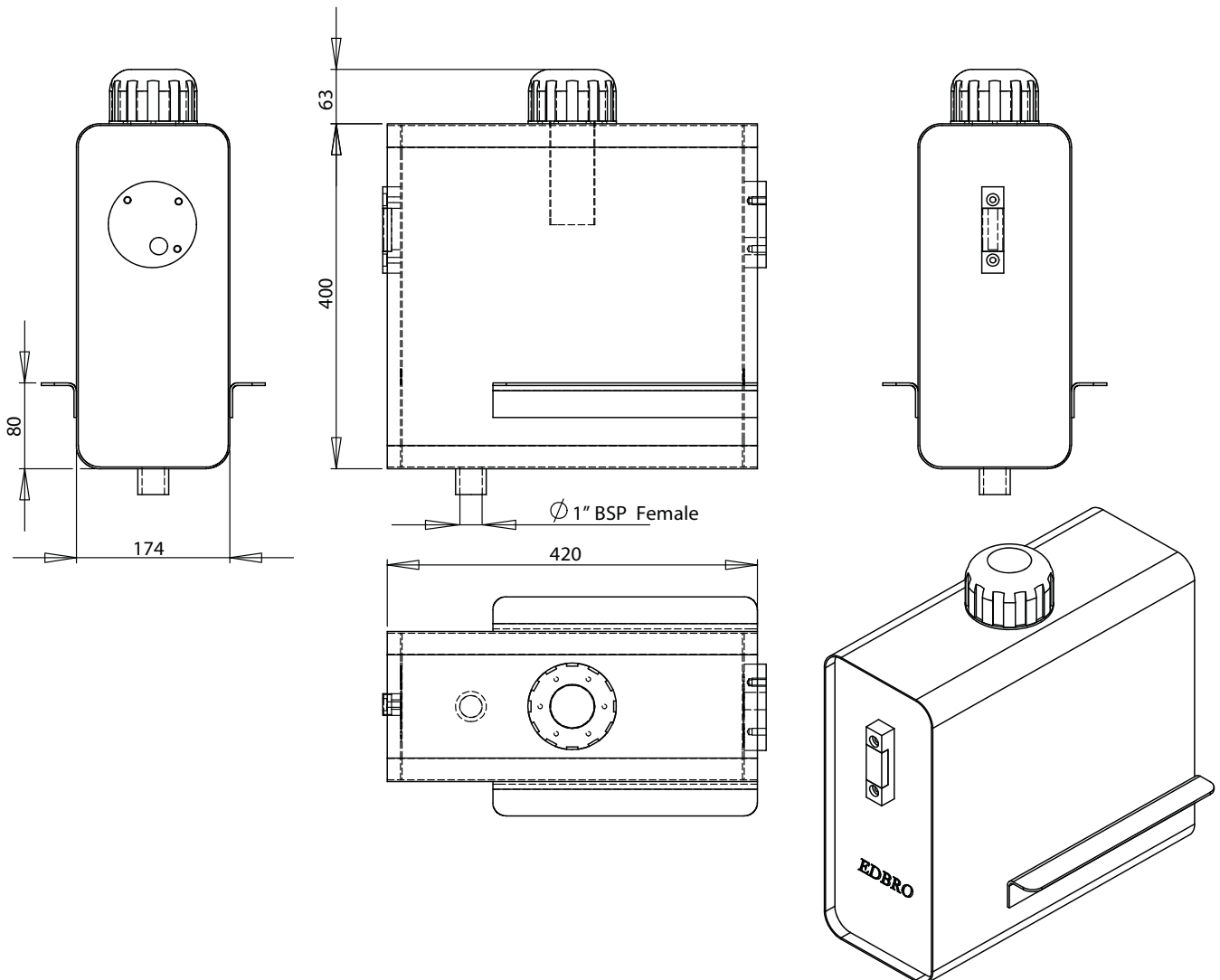
- \* Aluminium rear mount oil tank
- \* Suitable for rigid truck chassis
- \* Useable capacity - 75 litres
- \* Weight - 20.4kg



Steel Oil Tank: Rear Mount for Rigid Trucks - OTA723



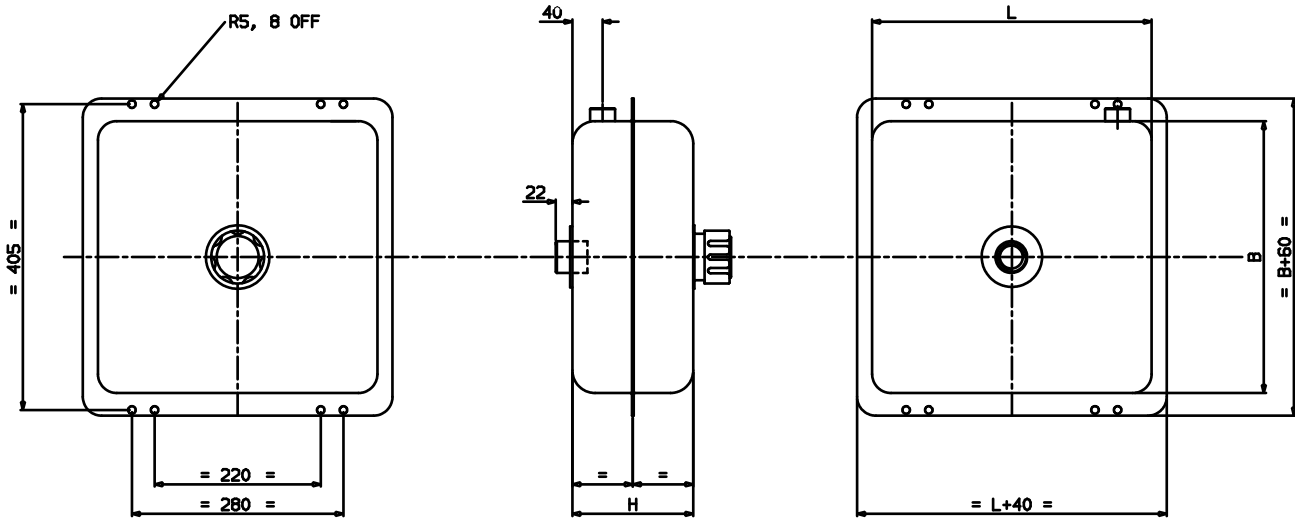
- \* Steel rear mount oil tank
- \* Suitable for rigid truck chassis
- \* Useable capacity - 18 litres
- \* Weight - 14kg
- \* Includes filler breather cap



All dimensions are given in mm unless otherwise stated. Technical Specifications are subject to change without notice.



Oil Tanks: Under Body



features

- To suit small under body cylinders
- High quality steel
- Integral oil level sight glass
- Steel tanks finished in chassis grey superior primer
- 1" BSP feed ports with integral sludge trap
- Auxiliary 3/4" BSP return port with sealed caps fitted
- Pressure tested
- Internally cleaned

Part Number	Dimensions (mm)			Useable Capacity (litres)	Total Capacity (litres)	Material	Mass (kg)
	H*	B	L				
<b>OT144/10</b>	160	360	370	10	21	Steel	5.5
<b>OT344/29</b>	300	360	370	29	40	Steel	7.0

All tanks optionally supplied with separate oil filler / air breather AF83. \* Add 65mm for filler cap.

**Tank capacity**

Total capacity is the amount of oil to fill the tank and leave 40mm air gap above the oil. Useable capacity is calculated assuming:

- A minimum of 50mm oil depth left at the bottom of the tank.
- The air gap of 40mm above the oil when the tank is full.

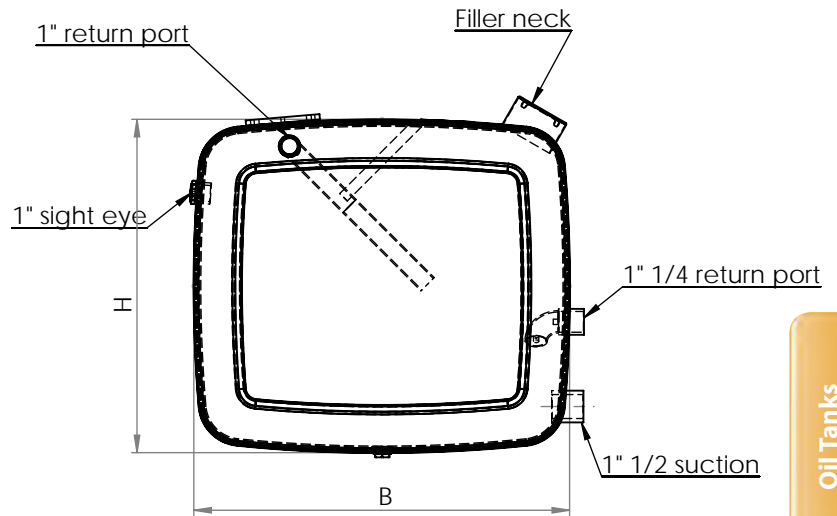
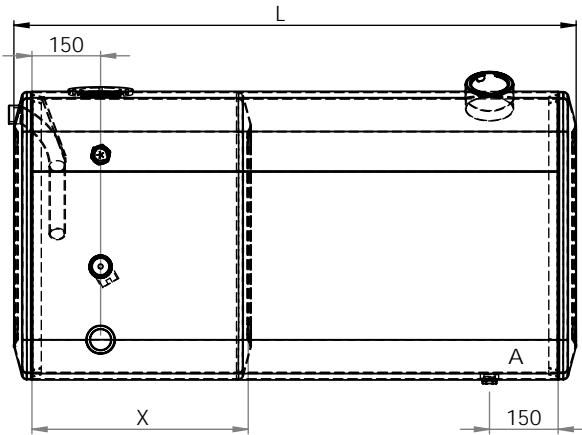
**Tank selection**

Select a tank that has a useable capacity greater than the swept volume of the cylinder.

**Combination Oil Tank: Side Mount for Tractor Unit - OTKT/\*\*\*/\*\*\*/**



- \* Fuel cap with key included
- \* Aluminium side mount tank for tractor unit
- \* Suitable for rigid truck chassis
- \* Combined tank for Oil and Diesel
- \* AF97 - Air Filler breather sold separately
- \* Fuel gauge not supplied



Oil Tanks

Part Number	Dimensions (mm)			Oil capacity (litres)	Diesel capacity (litres)	Material	Mass (kg)
	H	B	L				
OTKT/200/300*	630	700	1250	200	300	Aluminium	30
OTKT/200/330	630	700	1325	200	330	Aluminium	34
OTKT/200/350	630	700	1375	200	350	Aluminium	38
OTKT/200/400*	630	700	1400	200	400	Aluminium	42
OTKT/200/500	630	700	1590	200	500	Aluminium	48

\* Tanks available ex-stock  
All other tanks available to order.

*All dimensions are given in mm unless otherwise stated. Technical Specifications are subject to change without notice.*

**Tank Parts Kit - TPK01**

- Sufficient parts to build your own tank
- Steel or aluminium options
- Valve plate compatible with CT200 valve range
- For 1½" suction lines, 1" BSP auxiliary return
- Oil filler/breather with combined dipstick

**TPK01/S for steel tanks comprises:**

- 1 x AF97 filler breather
- 1 x BP227 valve plate
- 1 x NR1552 L.P. feed adaptor
- 1 x BU3 extra return boss
- 1 x NR994/4 plug 1" BSP
- 1 x DPP45H washer 1" BSP



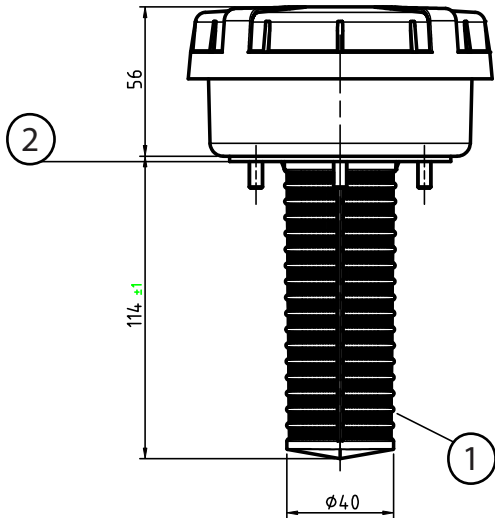
**TPK01/AL for aluminium tanks comprises:**

- 1 x AF97 filler breather
- 1 x BP227/AL valve plate (alloy)
- 1 x NR1684 L.P. feed adaptor (alloy)
- 1 x NR1685 extra return boss (alloy)
- 1 x NR994/4 plug 1" BSP
- 1 x DPP45H washer 1" BSP

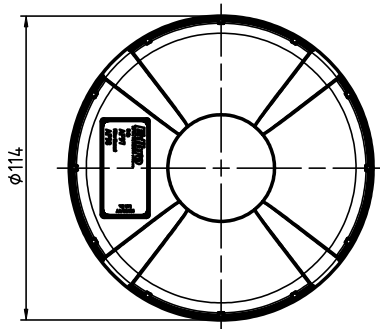
*For oil tank design guidance, refer to Information Bulletin 00 X 06.*

*All dimensions are given in mm unless otherwise stated. Technical Specifications are subject to change without notice.*

Combined Filler Breather - AF97



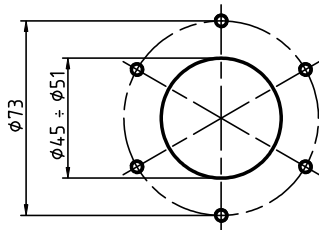
- \* Replaces AF83 tank cap
- \* Flow rate: 1600l/min ( $d_p=0.02$  BAR)
- \* Working Temperature: -25C - 110C
- \* AF98 filter media: resin impregnated paper 10uM
- \* Compatible with fluids: Mineral Oil ISO 2943
- \* Supplied with 6x DIN965 M5x16 Screws and 6x DIN7982C 4.8x19 Screws



Replacement parts:

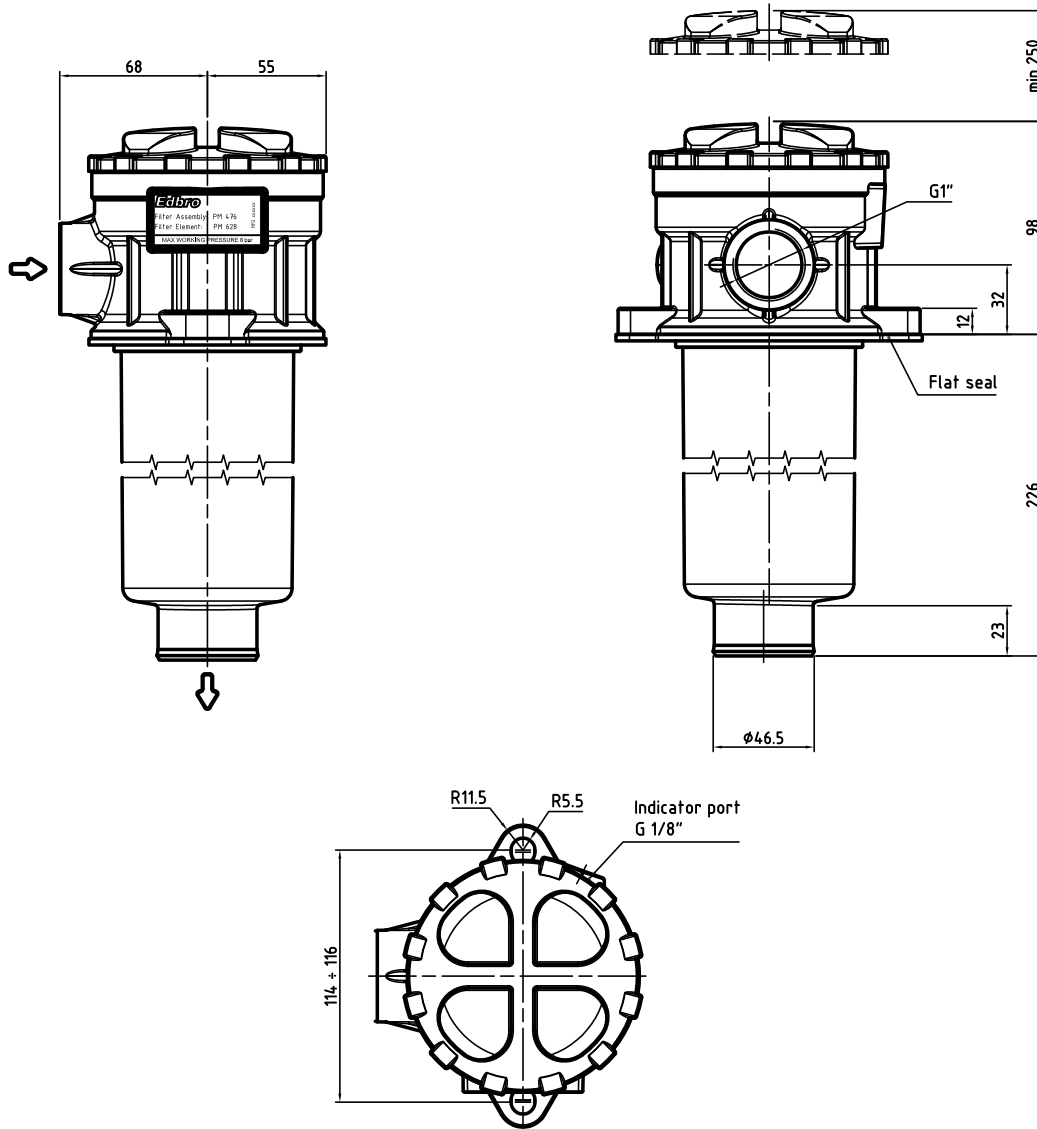
1. AF98 - Filter media

2. PM597 - Rubber gasket



External Return Filter - PM476

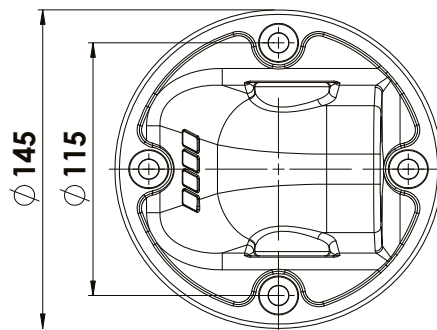
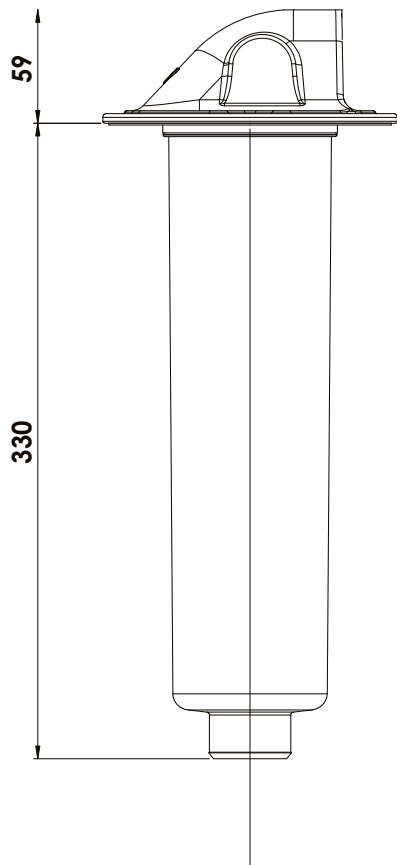
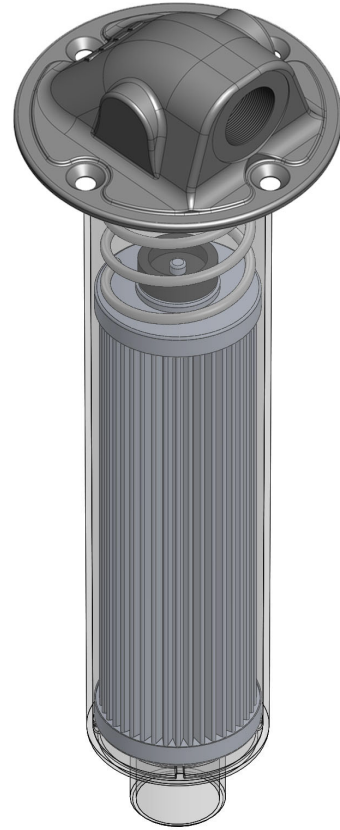
- \* Max working pressure: 8 bar
- \* Max flow rate: 300l/min
- \* Working Temperature: -25C - +110C
- \* Filter media: resin impregnated paper 25uM
- \* Inlet thread: G 1"
- \* Max pressure drop: 10 bar
- \* Weight: 1.19kg



All dimensions are given in mm unless otherwise stated. Technical Specifications are subject to change without notice.

External Return Filter - PM643 G1"

- \* Filter body Max working pressure: 7 bar
- \* Max flow rate: 200l/min
- \* Working Temperature: -25C - +110C
- \* Filter Grade : 60um
- \* Inlet thread: G 1"
- \* Max pressure : 3 bar (using 25um filter PM628)
- \* Weight: 1.2kg

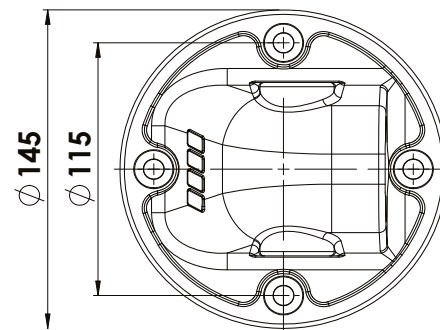
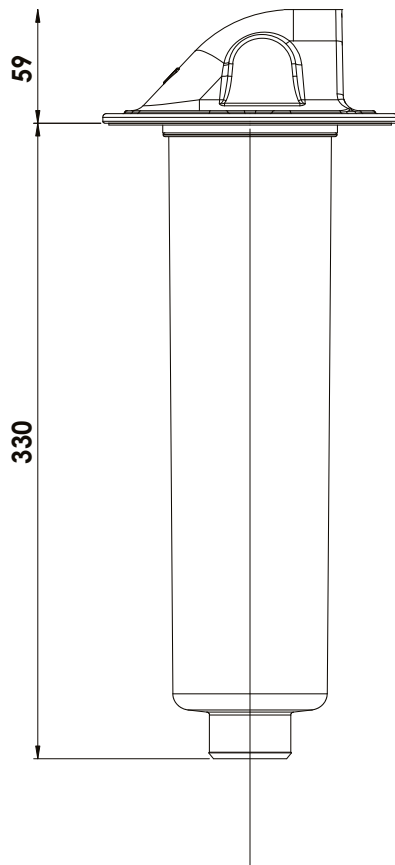
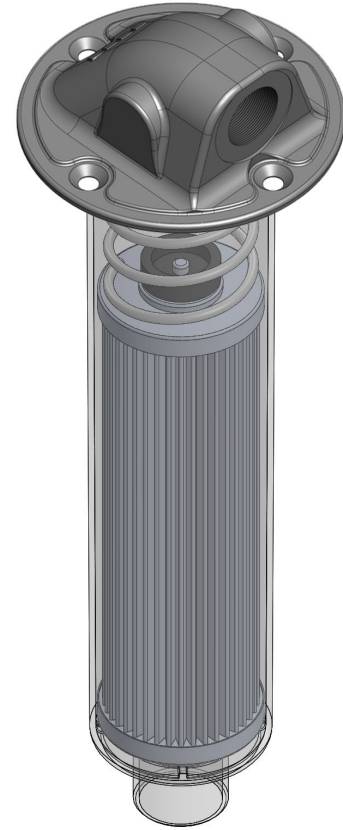


Replacement Filter PM628

Data based on 30mm<sup>2</sup>/s (cSt)

External Return Filter - PM642 G1"

- \* Filter body Max working pressure: 7 bar
- \* Max flow rate: 160l/min
- \* Working Temperature: -25C - +110C
- \* Filter Grade : 25um
- \* Inlet thread: G 1"
- \* Max pressure : 3 bar (using 25um filter PM628)
- \* Weight: 1.2kg

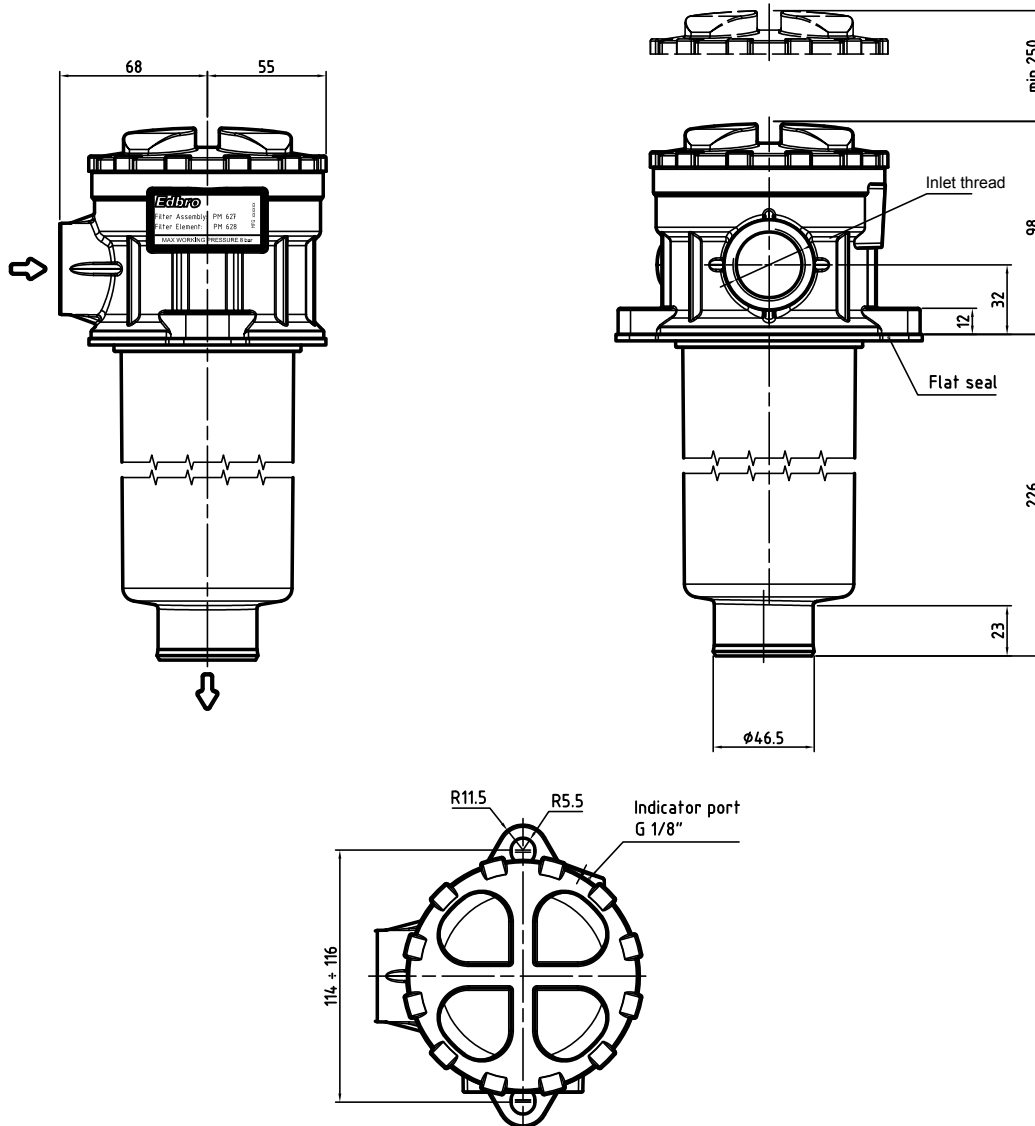


Replacement Filter PM628

Data based on 30mm<sup>2</sup>/s (cSt)

External Return Filter - PM627-G1.1/4"

- \* Filter body Max working pressure: 7 bar
- \* Max flow rate: 200 l/min
- \* Working Temperature: -25C - +110C
- \* Filter Grade: 25um
- \* Inlet thread: G 1.1/4"
- \* Max pressure : 3 bar (using 25um filter PM628 )
- \* Weight: 1.2kg



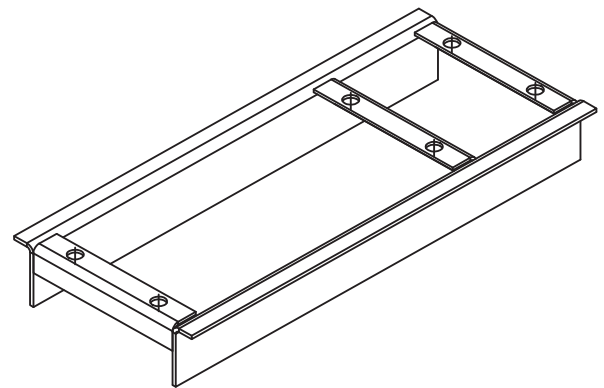
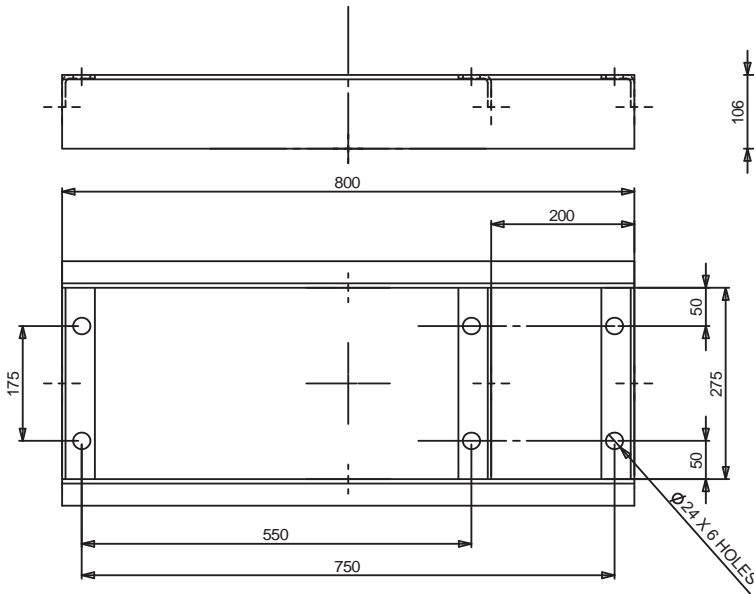
Replacement Filter PM628

Data based on 30mm<sup>2</sup>/s (cSt)



**Oil Tank Support Bracket - PCA215**

- \* PCA215 support bracket suits PCA214 & PCA216 cross members
- \* Weight: 28 kg
- \* Designed to suit the following oil tanks:
  - OTA635F/65
  - OT635/65
  - OT637F/84
  - OT637/84



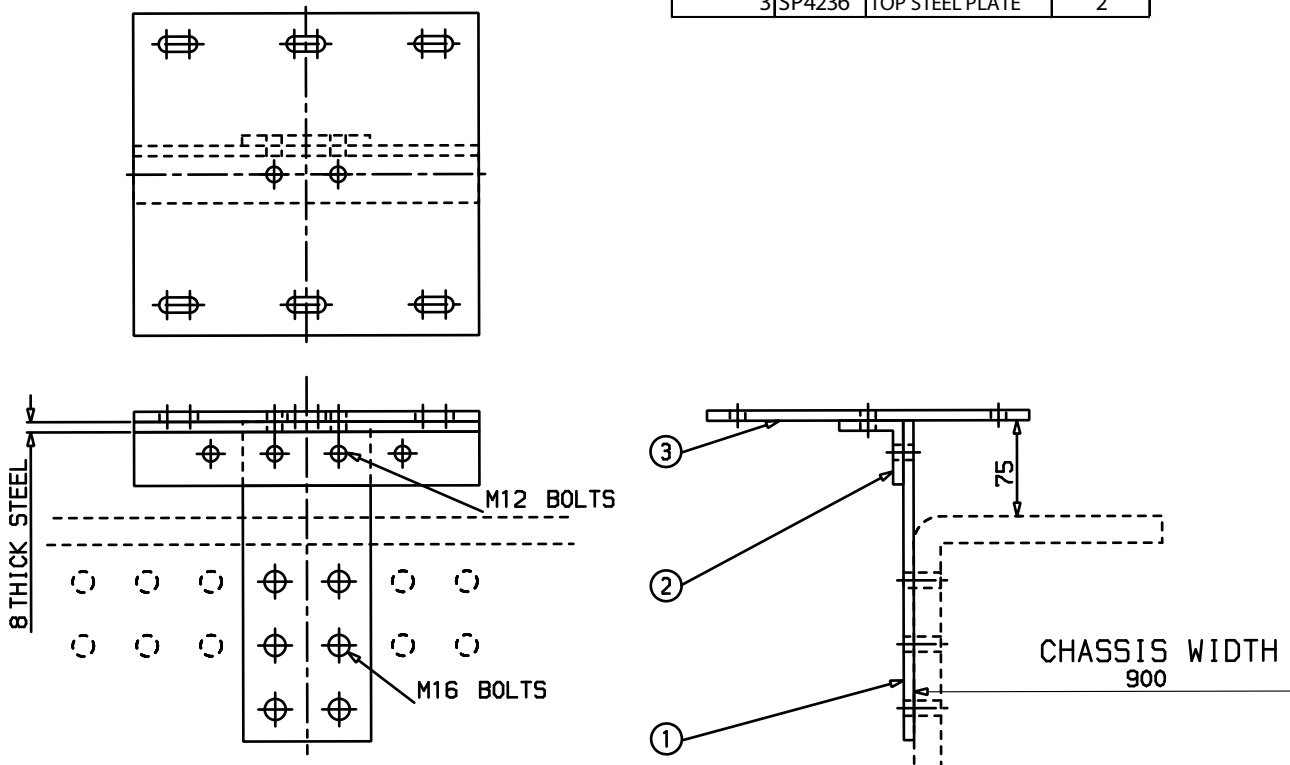
All dimensions are given in mm unless otherwise stated. Technical Specifications are subject to change without notice.

**Oil Tank Bracket : OTB279**

- \* Steel rear mounted bracket for Steel and Aluminum tanks
- \* Fitted to chassis
- \* Parts supplied together as kit
- \* Painted grey to match chassis colour
- \* Bolts not supplied in kit
- \* Weight - 10kg

OTB279 Kit List

	Part No.	Description	Quantity
1	SP4235	BASE STEEL PLATE	2
2	BSP779	STEEL ANGLE	2
3	SP4236	TOP STEEL PLATE	2



All dimensions are given in mm unless otherwise stated. Technical Specifications are subject to change without notice.