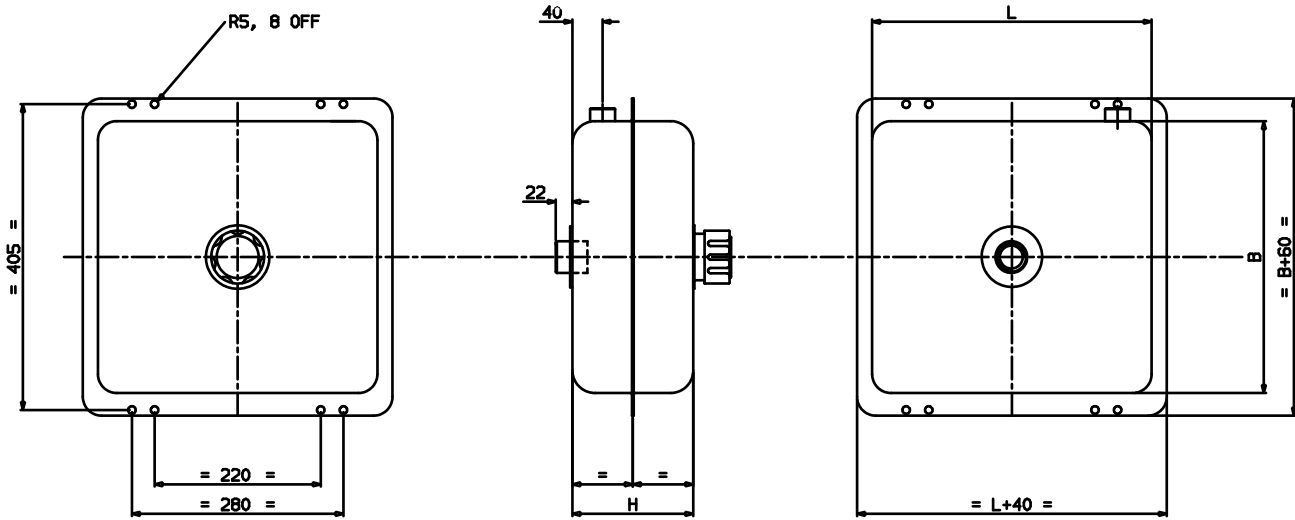


Oil Tanks: Under Body



features

- To suit small under body cylinders
- High quality steel
- Integral oil level sight glass
- Steel tanks finished in chassis grey superior primer
- 1" BSP feed ports with integral sludge trap
- Auxiliary 3/4" BSP return port with sealed caps fitted
- Pressure tested
- Internally cleaned

Part Number	Dimensions (mm)			Useable Capacity (litres)	Total Capacity (litres)	Material	Mass (kg)
	H*	B	L				
OT144/10	160	360	370	10	21	Steel	5.5
OT344/29	300	360	370	29	40	Steel	7.0

All tanks optionally supplied with separate oil filler / air breather AF83. * Add 65mm for filler cap.

Tank capacity

Total capacity is the amount of oil to fill the tank and leave 40mm air gap above the oil. Useable capacity is calculated assuming:

- A minimum of 50mm oil depth left at the bottom of the tank.
- The air gap of 40mm above the oil when the tank is full.

Tank selection

Select a tank that has a useable capacity greater than the swept volume of the cylinder.