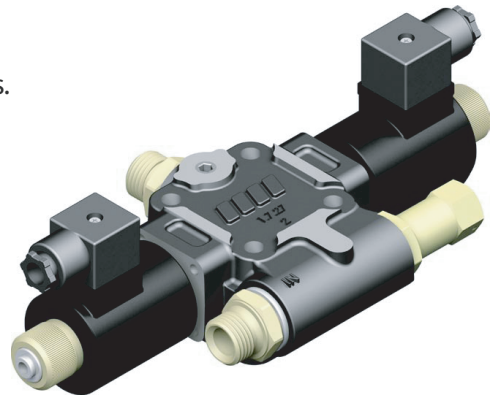


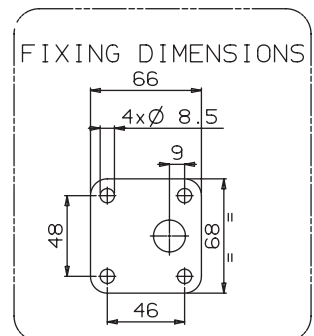
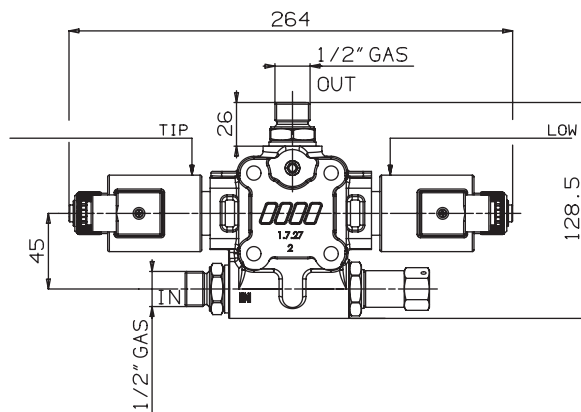
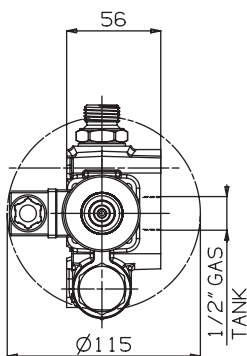
Valve: Electric Control Valve

- \* Switch operated electric tipping valve to suit light duty tipper trucks. Open-centre hydraulic scheme according to CE standards
- \* Part numbers PM552, PM457 & PM453 (see table below)
- \* Built-in check and adjustable safety valves
- \* Cathaphoresis coated body and nickel spool
- \* Compact size
- \* Guaranteed for oil temperature range -25-80C, viscosity range 12-100 cSt and oil filtering 25um.



SPECIFICATION

Tipping Valve Type	Order Code	IN	TANK	OUT	Wiring kit
12V, 140 bar	PM552	G 1/2	G 1/2	G 1/2	PM553
24V, 140 bar	PM457				PM470
24V, 175 bar	PM453				



All dimensions are given in mm unless otherwise stated. Technical Specifications are subject to change without notice.