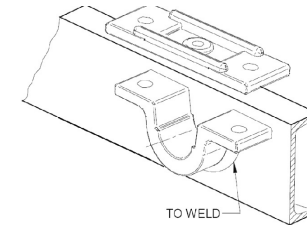


To ensure that there is sufficient clearance at full tip, the slotted ring that holds the ball in place must face rearwards.

Insert coupling into ram inlet. Screw coupling into inlet, leaving 2mm so that the pin can easily rotate during tipping.

Dim	(mm)	Oil Volume	15.6 Litres
C1	240	Weight	66kg
F	240	Working Pressure	160bar
L1	480	Total Stroke	1765mm
R	260		



Brackets EBF1383 welded to crossmember 3" x 1.5" RSC

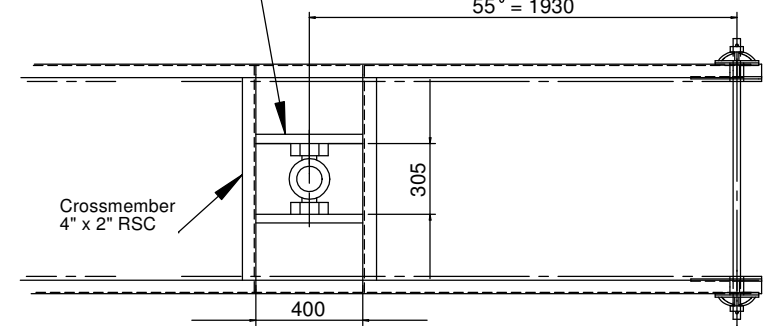
45° = 2300
50° = 2100
55° = 1930

Lift Capacity / Angle of Tip Chart

Overhang	Angle	Body Length (mm)									
		3600	3800	4000	4200	4400	4600	4800	5000	5200	5400
300	45°					8.8	8.24	7.75	7.32		
	50°		11.06	10.15	9.37	8.71	8.14				
	55°	12.59	11.39	10.39	9.55	8.86					
450	45°						9.11	8.51	7.99	7.53	
	50°				10.58	9.74	9.03	8.41	7.88		
	55°		13.3	11.96	10.87	9.96	9.19	8.53			
600	45°							9.42	8.8	8.24	7.75
	50°					11.04	10.15	9.37	8.71	8.14	
	55°				12.59	11.39	10.39	9.55	8.84		

Body & Payload (Tonnes)

Extension	O/D (mm)	Thrust (T)
0	-	-
1	145	29.7
2	126	22.4
3	107	16.1
4	91	11.7
5	76	8.1
6	61	5.2



This drawing is the property and copyright of EDBRO PLC and must not be re-issued, copied or reproduced without their consent.

DATE 18 June 2007

Edbro
SETTING THE INDUSTRY STANDARD

TITLE Underbody Cylinder

EDBRO PLC
BOLTON
LANCASHIRE
ENGLAND

MOD DATE

DRAWN

M. Griffiths

PART No. UB140M601765

#+