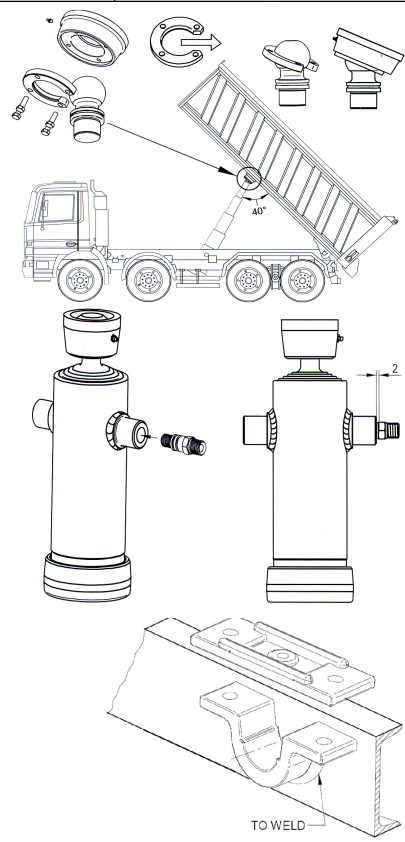


Dim	(mm)	Oil Volume	21.5 Litres
C1	248	Weight	87kg
F	255	Working Pressure	160bar
L1	503	Total Stroke	1810mm
R	380		



To ensure that there is sufficient clearance at full tip, the slotted ring that holds the ball in place must face rearwards.

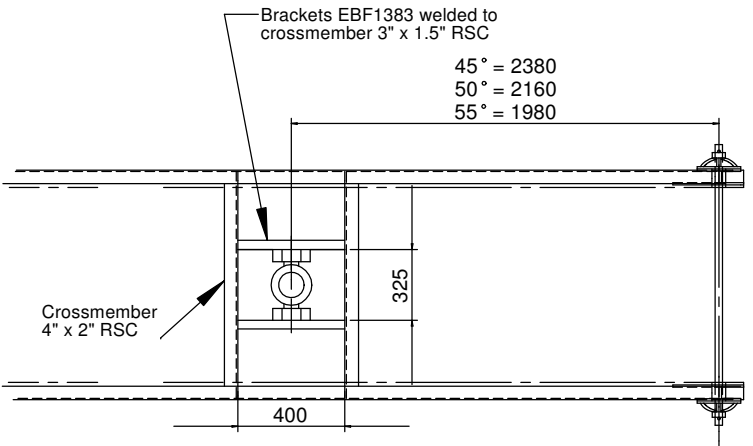
Insert coupling into ram inlet. Screw coupling into inlet, leaving 2mm so that the pin can easily rotate during tipping.

Lift Capacity / Angle of Tip Chart

Overhang	Angle	Body Length (mm)							
		4000	4200	4400	4600	4800	5000	5200	5400
300	45°			11.2	10.5	9.8	9.29	8.8	
	50°	12.9	11.9	11.0	10.3	9.7			
	55°	13.2	12.1	11.2					
450	45°				11.55	10.81	10.15	9.39	
	50°		13.41	12.35	11.45	10.67	9.99		
	55°	15.1	13.74	12.6	11.63	10.79			
600	45°						11.17	10.47	9.84
	50°				12.86	11.88	11.04	10.32	9.68
	55°	15.94	14.4	13.14	12.09	11.19			

Body & Payload (Tonnes)

Extension	O/D (mm)	Thrust (T)
0	-	-
1	165	38.4
2	145	29.7
3	126	22.4
4	107	16.1
5	88	10.9
5	68	6.5



45° = 2380  
50° = 2160  
55° = 1980

This drawing is the property and copyright of EDBRO PLC and must not be re-issued, copied or reproduced without their consent.

DATE	18 June 2007
MOD DATE	
PROJECT	UB Cylinders
DRAWN	M. Griffiths



TITLE	Underbody Cylinder
PART No.	UB160M601810

#+ EDBRO PLC  
BOLTON  
LANCASHIRE  
ENGLAND