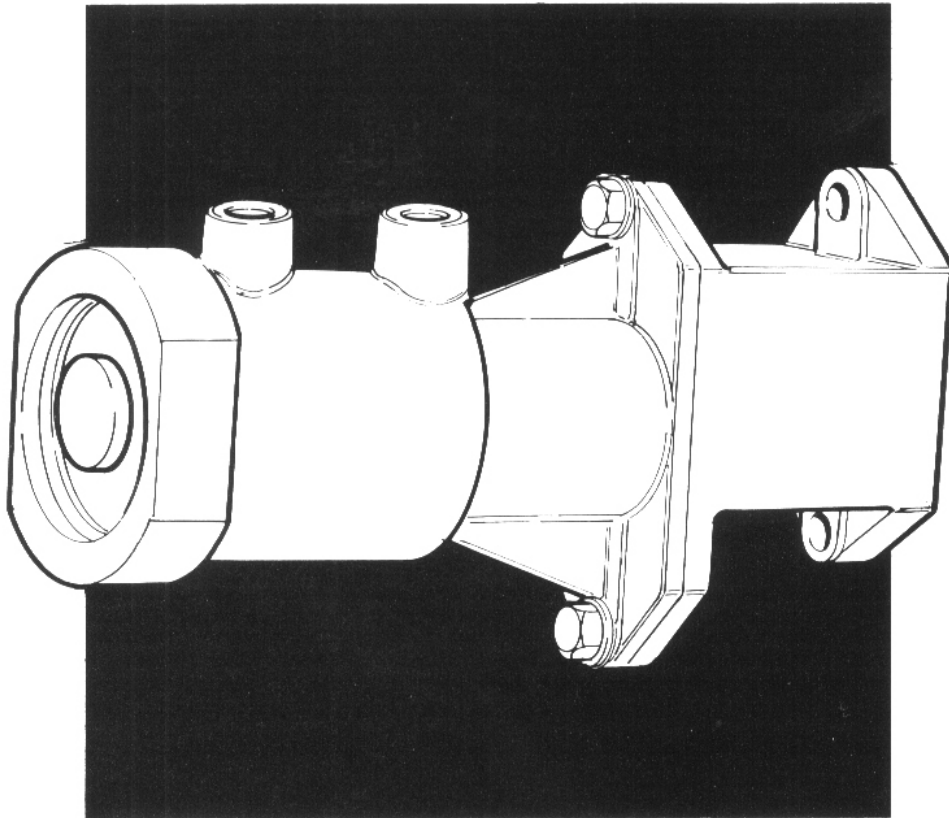


SERVICE INFORMATION



AIR OPERATED VALVE CONTROL UNIT TLA 44

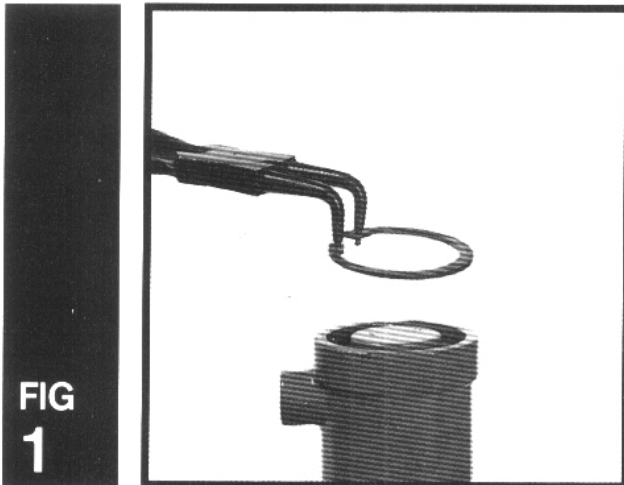
Edbro

QUALITY, TECHNOLOGY
AND ACHIEVEMENT

AIR OPERATED VALVE CONTROL UNIT TLA 44

TO DISMANTLE CONTROL ASSEMBLY

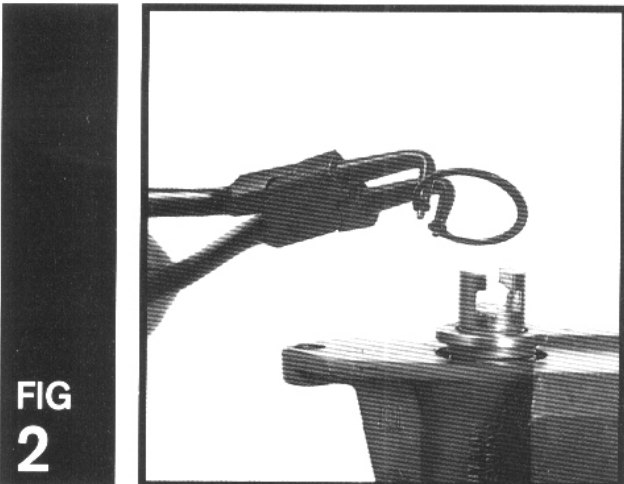
- 1 Remove air control cylinder ① from control valve by unscrewing two setscrews ② and spring washers ③ and sliding control shaft claw end ④ off the valve extension shaft.



- 2 Remove circlip ⑤ retaining cover plate ⑥ and withdraw cover plate from cylinder body (Fig 1).

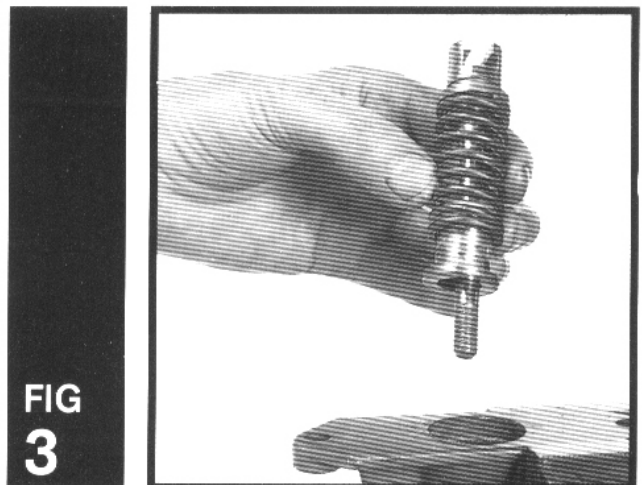
- 3 Remove "O" ring seal ⑦ from cover plate ⑥ and replace.

- 4 Unscrew securing nut ⑧.



- 5 Remove circlip ⑨ from inside flange face and remove collar ⑩ (Fig 2).

- 6 Withdraw claw ended shaft ④ from cylinder body.



- 7 Collect the spring guide ⑪, spring ⑫ and distance stop ⑬ from barrel of shaft (Fig 3).

- 8 Using a drift, from flange end, tap out the piston assembly ⑭.

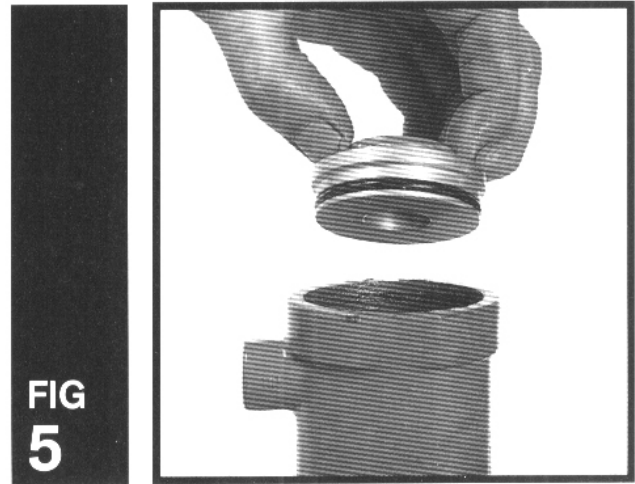
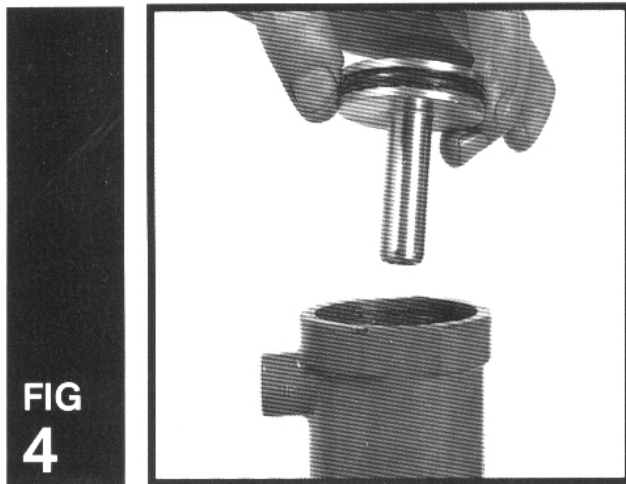
- 9 Remove "O" ring seals ⑮ and ⑯ from inside and outside respectively of piston head and replace.

- 10 Hook out "O" ring seal ⑰ from inside cylinder body and replace.

- 11 Check tension spring ⑫, replace if worn or damaged.

TO ASSEMBLE CONTROL HOUSING

- 1 Locate "O" ring (17) in cylinder body (1), lubricate with LP grease. Fit "O" rings (15)(16) onto piston head. Insert piston stem (14) through "O" ring seal (17). (Fig 4).

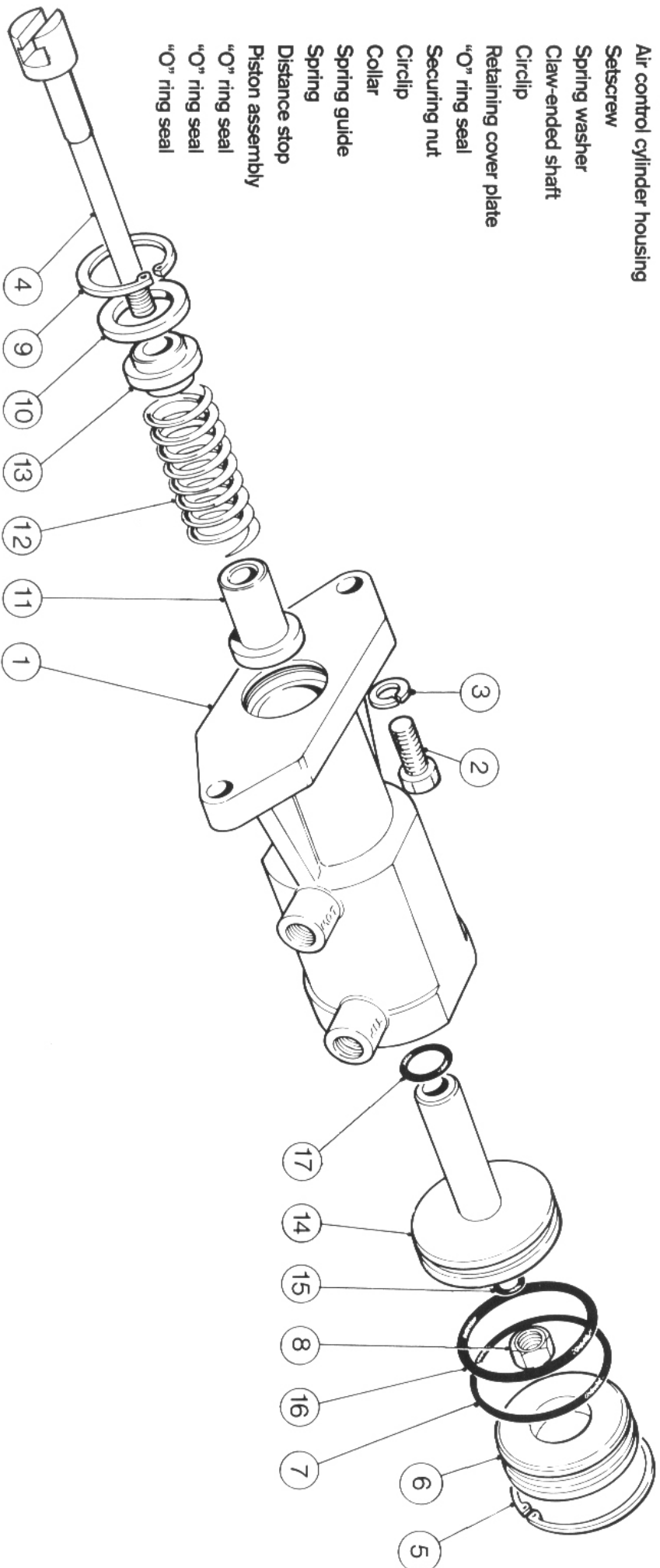


- 2 Place distance stop (13) onto claw-end shaft (4).
- 3 Place spring (12) onto spring guide (11) and position guide in shaft.
- 4 Apply grease to spring (12) and inside of cylinder body.
- 5 Insert shaft assembly into cylinder through piston (14), ensuring that spring guide (13) locates on outside diameter of piston stem.
- 6 Refit securing nut (8) on end of shaft (4) and tighten.
- 7 Position "O" ring (7) on collar (10) and press into flange face and secure in position with circlip (9).

- 8 Refit cover plate (6) into cylinder body and secure in position with circlip (5). (Fig 5).

AIR OPERATED VALVE CONTROL UNIT TLA 44

Item No.	Description
1	Air control cylinder housing
2	Setscrew
3	Spring washer
4	Claw-ended shaft
5	Circlip
6	Retaining cover plate
7	"O" ring seal
8	Securing nut
9	Circlip
10	Collar
11	Spring guide
12	Spring
13	Distance stop
14	Piston assembly
15	"O" ring seal
16	"O" ring seal
17	"O" ring seal



Edbro plc, Lever Street, Bolton BL3 6DU England

Tel: 0204 28888, Fax: 0204 31957

Tel: 44 (0) 204 28888, Fax: 44 (0) 204 31957 Telex: 63196 EDBROH G

Edbro Service Information Manual August 1992

Edbro
QUALITY TECHNOLOGY
AND ACHIEVEMENT