

Valve: Hydraulic Divertor Valve

- * Two position pneumatically controlled hydraulic flow divertor
- * Part numbers VD075 & VD100 depending on port size (see table below)
- * Weight = 2.5kg
- * Max working pressure: 350 bar
- * Max pneumatic pressure: 12 bar
- * High quality paint finish



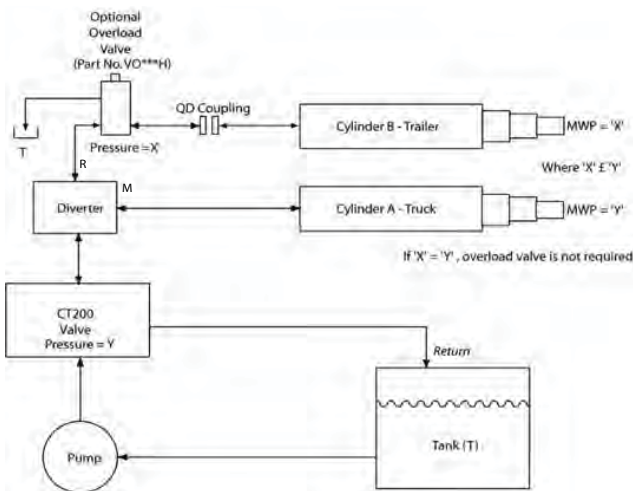
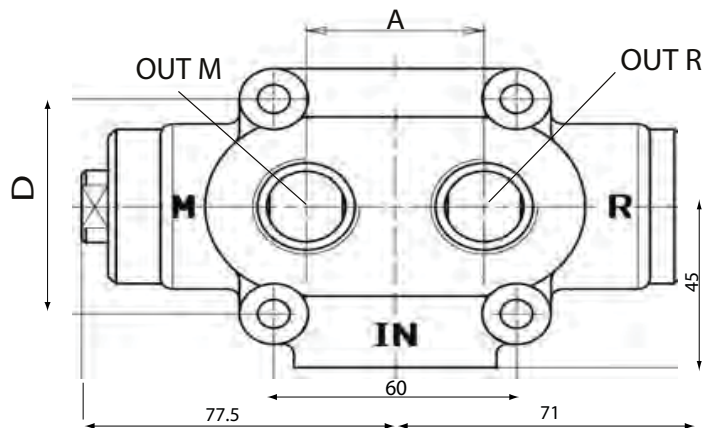
SPECIFICATION

Part No	IN	M&R	Dim A	Dim D	Flow Rate (L/min)
VD075	3/4" BSP	3/4" BSP	44	60	200
VD100	1" BSP	1" BSP	55	65	250

OPTIONS:

VDK075 kit also available for direct mounting to CT200 valve, including:

- 1 x VD075 divertor valve
- 1 x NR1694 positional union
- 2 x DPP45H/SC 1" self centering washer
- 2 x APU35 6mm air fitting



GUIDELINES

- * If both cylinders require the same maximum operating pressure, the overload valve is not required.
- * Divertor rest position is port M; applying air pressure selects port R.
- * Divertor can be installed directly onto the CT200 valve using adaptor NR1694.
- * When using a CX Series cylinder, the tank base pad should have a closure plate fitted, and the valve and divertor assembly should be installed remotely from the cylinder.
- * When using a separate oil tank, the CT200 valve and divertor valve can be installed directly to the valve mounting plate on the tank.
- * The overload cartridge in the CT200 valve **MUST** be set higher than the cartridge in the overload valve (i.e. service line from overload valve must go to lower pressure cylinder).

NOTE: Divertor must be set **BEFORE** control valve CT200 is operated.

All dimensions are given in mm unless otherwise stated. Technical Specifications are subject to change without notice.