

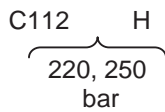
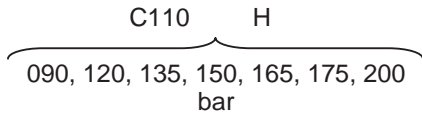
**CT200 VALVE: Options & Accessories**

**Single Pressure Relief Valves**

**VC110xxxH & VC112xxxH**

Replacement cartridges for the standard CT200 single pressure relief valve.

When ordering, use the following part numbers:



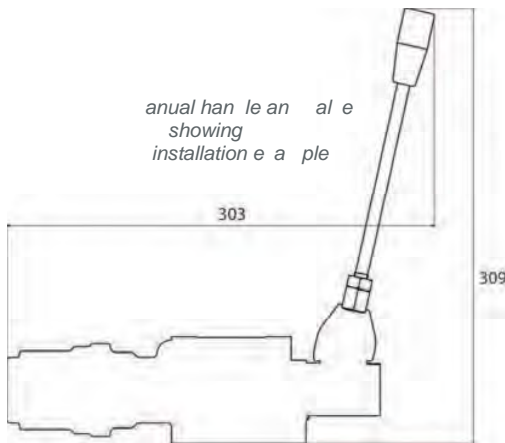
**Manual Handle**

**RLA72** 90° to valve face

**RLA73** In-line with valve

For applications where an air control is not possible, Edbro offer the manual handle as an additional fit.

The end cap is removed and replaced by the manual handle fit.



**Dual Pressure Relief Valves**

**VC115H & VC116H**

An adjustable pressure relief valve, designed for tractor unit installations. This relief valve allows the tractor unit to be attached to a range of trailers with cylinders operating at different pressures.

The dual pressure relief valve replaces the single pressure relief valve, and is installed in the same valve fitting.

Two models are available:

C115H: 150/220 bar

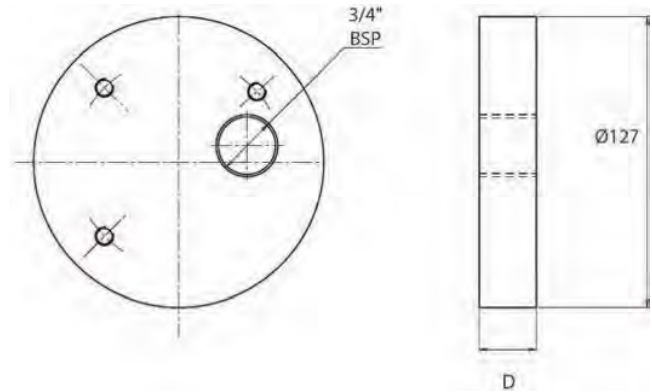
C116H: 150/250 bar

**Valve Mounting Blocks**

**BP227 & BP227/AL**

This block is designed for direct mounting of an Edbro CT200 valve. The block is available in steel or aluminium, and is to be welded directly to the oil tank.

Dimension D:      Steel - 25mm  
                         Aluminium - 30mm



**Pump Inlet Adaptors**

**NR1969 & NR1697**

Two inlet adaptors, allowing different size pipe fittings from the pump to be used:

3/4" BSP Adaptor NR1702

1" BSP Adaptor NR1703

**Speed Control Kit**

**SA2879**

When using the valve in pneumatic configuration, this is a replacement end cap which allows the spool stroke to be adjusted using a screw.

By limiting the stroke in this way, return flow through the valve can be limited, thus increasing control over the speed of operation.

All dimensions are given in mm unless otherwise stated. Technical Specifications are subject to change without notice.